

\$0 - # #200 10464 176 St Nw, Edmonton

MLS® #E4289702

\$0

Bedroom, Bathroom, 2,194 sqft
Office on 0.00 Acres

Stone Industrial, Edmonton, AB

â€¢ Strategically located in West Edmonton with easy access to Stony Plain Road, Anthony Henday Drive and Yellowhead Highway â€¢ 6 Fully developed office spaces available, ranging from 916 - 2,194 sq.ft.Â±
â€¢ Move in ready with updated flooring for new tenants â€¢ Double row surface parking
â€¢ Well maintained and managed 2-storey property

Built in 1980

Essential Information

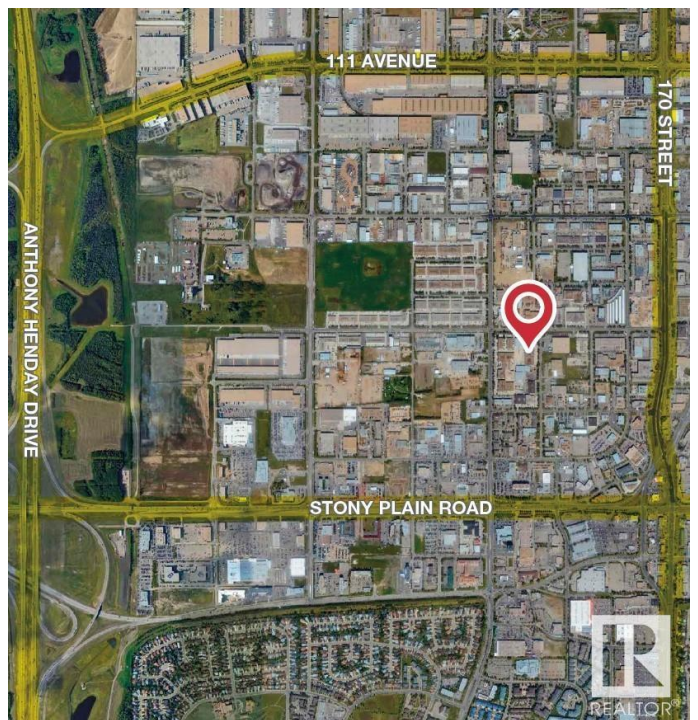
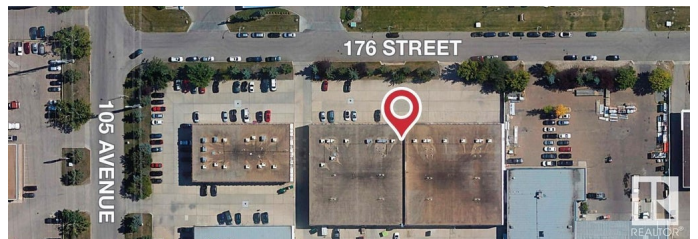
MLS® #	E4289702
Square Footage	2,194
Acres	0.00
Year Built	1980
Type	Office

Community Information

Address	# #200 10464 176 St Nw
Area	Edmonton
Subdivision	Stone Industrial
City	Edmonton
Province	AB
Postal Code	T5S 1L3

Exterior

Construction	Concrete Block, Wood Frame
--------------	----------------------------



Additional Information

Date Listed April 26th, 2022

Zoning IB

DATA IS DEEMED RELIABLE BUT IS NOT GUARANTEED ACCURATE BY THE REALTORS® ASSOCIATION OF EDMONTON. COPYRIGHT 2024 BY THE REALTORS® ASSOCIATION OF EDMONTON. ALL RIGHTS RESERVED.Trademarks are owned or controlled by the Canadian Real Estate Association (CREA) and identify real estate professionals who are members of CREA (REALTOR®, REALTORS®) and/or the quality of services they provide (MLS®, Multiple Listing Service®)

Listing information last updated on May 1st, 2024 at 10:30pm MDT