

## \$0 - 14220 112 Av Nw, Edmonton

MLS® #E4314132

**\$0**

Bedroom, Bathroom, 2,066 sqft

Office on 0.00 Acres

Huff Bremner Estate Industrial, Edmonton, AB

â€¢ 2 spaces available - 1,113 sq.ft. or 2,066 sq.ft. â€¢ Tenants have access to common area lounge, auditorium and 4 secure levels of parking â€¢ Lower Level is open concept available immediately â€¢ Second floor is currently shell space ready for interior improvements â€¢ High level of security â€¢ Recently upgraded elevator â€¢ Quick access to Yellowhead Trail, Stony Plain Road and St.Albert Trail â€¢ Parking ratio is approximately 5 stalls per 1,000 sq.ft.

Built in 1950

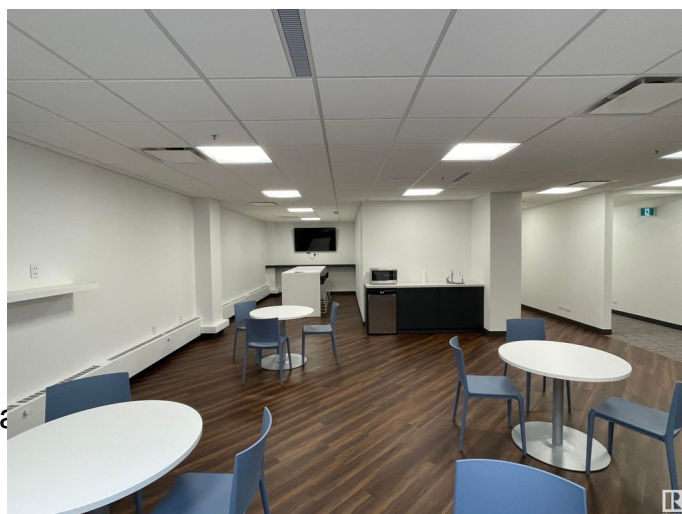
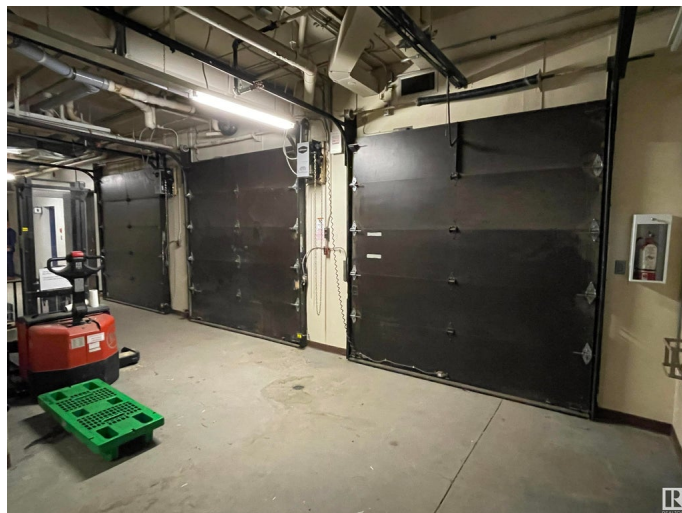
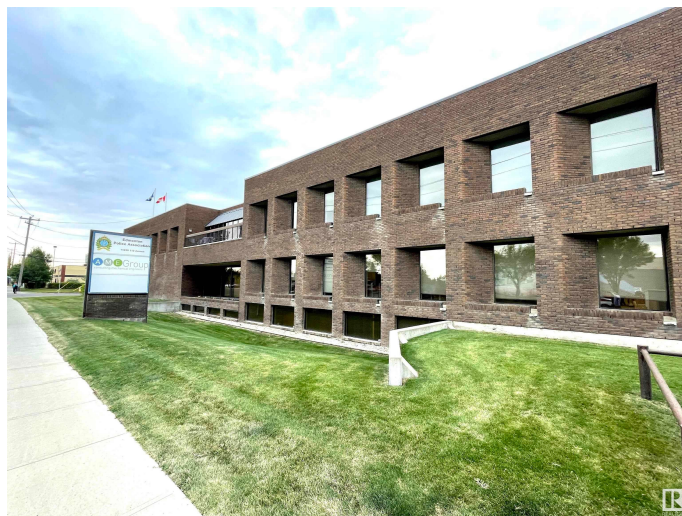
### Essential Information

MLS® #	E4314132
Square Footage	2,066
Acres	0.00
Year Built	1950
Type	Office

### Community Information

Address	14220 112 Av Nw
Area	Edmonton
Subdivision	Huff Bremner Estate Industrial
City	Edmonton
Province	AB
Postal Code	T5M 2T8

### Exterior



Construction            Brick/Masonry

**Additional Information**

Date Listed            September 20th, 2022

Zoning                IB

DATA IS DEEMED RELIABLE BUT IS NOT GUARANTEED ACCURATE BY THE REALTORS® ASSOCIATION OF EDMONTON. COPYRIGHT 2024 BY THE REALTORS® ASSOCIATION OF EDMONTON. ALL RIGHTS RESERVED.Trademarks are owned or controlled by the Canadian Real Estate Association (CREA) and identify real estate professionals who are members of CREA (REALTOR®, REALTORS®) and/or the quality of services they provide (MLS®, Multiple Listing Service®)  
Listing information last updated on April 19th, 2024 at 8:16pm MDT