

## \$59,900 - 4831 52 Avenue, Tofield

MLS® #E4400214

**\$59,900**

0 Bedroom, 0.00 Bathroom,  
Single Family on 0.00 Acres

Tofield, Tofield, AB

100' x 150' vacant, fully serviced lot with back alley access in the community of Tofield. Zoned residential- low density which allows for single family home or a duplex. \*\*Town of Tofield offers residential tax rebate for new builds! Excellent location- walking distance to all downtown amenities. Great building opportunity!

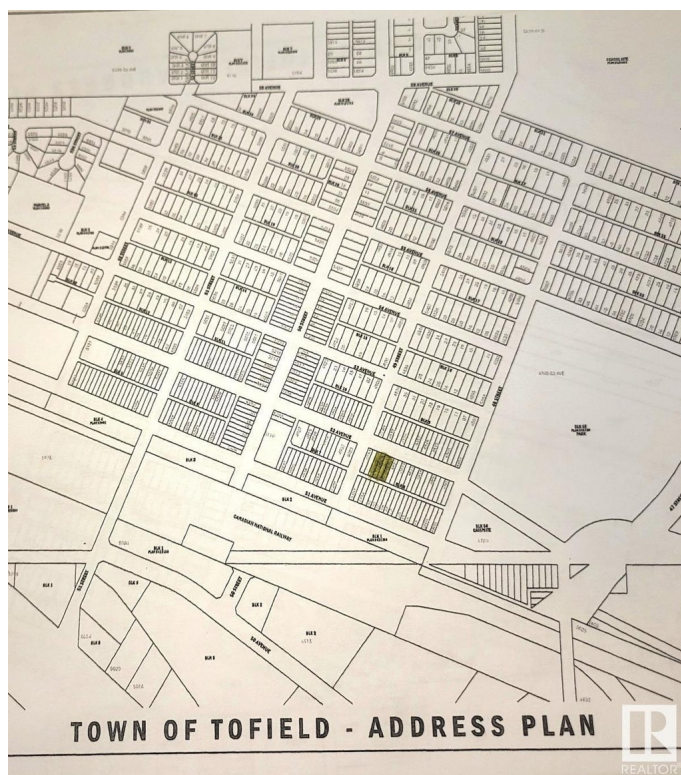
### Essential Information

MLS® #	E4400214
Price	\$59,900
Bathrooms	0.00
Acres	0.00
Type	Single Family
Sub-Type	Vacant Lot/Land
Status	Active

### Community Information

Address	4831 52 Avenue
Area	Tofield
Subdivision	Tofield
City	Tofield
County	ALBERTA
Province	AB
Postal Code	T0B 4J0

### Exterior



Exterior Features    Back Lane, Flat Site, Shopping Nearby, See Remarks

**School Information**

Elementary	C.W.Sears(K-4)
Middle	Tofield(5-9)
High	Tofield

**Additional Information**

Date Listed	August 1st, 2024
Days on Market	278
Zoning	Zone 80

DATA IS DEEMED RELIABLE BUT IS NOT GUARANTEED ACCURATE BY THE REALTORS® ASSOCIATION OF EDMONTON. COPYRIGHT 2025 BY THE REALTORS® ASSOCIATION OF EDMONTON. ALL RIGHTS RESERVED.Trademarks are owned or controlled by the Canadian Real Estate Association (CREA) and identify real estate professionals who are members of CREA (REALTOR®, REALTORS®) and/or the quality of services they provide (MLS®, Multiple Listing Service®)

Listing information last updated on May 6th, 2025 at 12:17pm MDT