

## \$1,350,000 - 58114 Hwy 28, Rural Thorhild County

MLS® #E4403396

**\$1,350,000**

3 Bedroom, 2.50 Bathroom, 1,929 sqft

Rural on 160.00 Acres

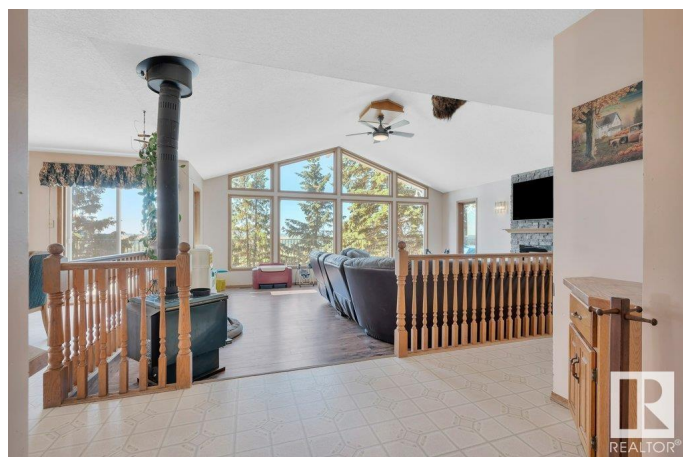
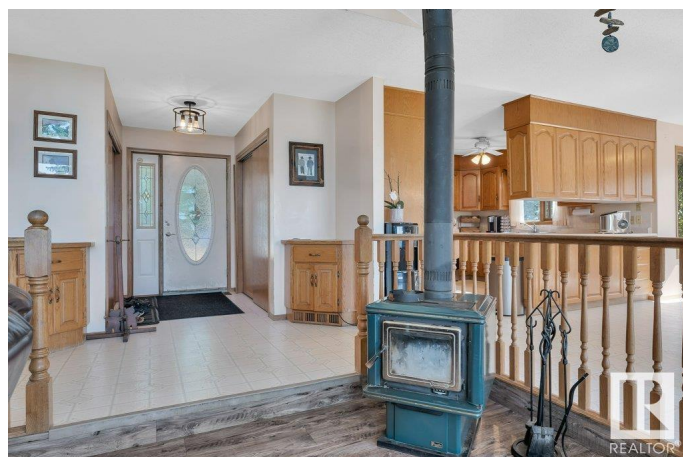
None, Rural Thorhild County, AB

Spacious bungalow situated on 160 acres with breathtaking views overlooking the Redwater River Valley. The main home features 3 bedrooms, including a primary suite with a 3-piece ensuite and an adjoining room with a jacuzzi tub. The living room boasts vaulted ceilings, a wood-burning stove, and an electric fireplace, complemented by a 4-piece main bathroom and an open floor plan. Adjacent to the house is a fully heated and insulated building, ideal for use as a home office. Additionally, there is a 3-bedroom mobile home on the property, perfect for accommodating extra family members or a farmhand. The property is well-equipped with numerous outbuildings, barns, and a Quonset. It is fully fenced and cross-fenced for livestock, including a game fence suitable for bison and elk.

Built in 1993

### Essential Information

MLS® #	E4403396
Price	\$1,350,000
Bedrooms	3
Bathrooms	2.50
Full Baths	2
Half Baths	1
Square Footage	1,929



Acres	160.00
Year Built	1993
Type	Rural
Sub-Type	Detached Single Family
Style	Bungalow
Status	Active

### Community Information

Address	58114 Hwy 28
Area	Rural Thorhild County
Subdivision	None
City	Rural Thorhild County
County	ALBERTA
Province	AB
Postal Code	T0A 2W0

### Amenities

Features	Deck, Hot Tub, Patio
----------	----------------------

### Interior

Interior Features	ensuite bathroom
Heating	Forced Air-1, Natural Gas
Stories	1
Has Suite	Yes
Has Basement	Yes
Basement	Partial, Unfinished

### Exterior

Exterior	Wood
Exterior Features	Cross Fenced, Fenced, Hillside, See Remarks
Construction	Wood
Foundation	Concrete Perimeter

### Additional Information

Date Listed	August 20th, 2024
Days on Market	347
Zoning	Zone 60

DATA IS DEEMED RELIABLE BUT IS NOT GUARANTEED ACCURATE BY THE REALTORS® ASSOCIATION OF EDMONTON. COPYRIGHT 2025 BY THE REALTORS® ASSOCIATION OF EDMONTON. ALL RIGHTS RESERVED. Trademarks are owned or controlled by the Canadian Real Estate Association (CREA) and identify real

estate professionals who are members of CREA (REALTOR®®, REALTORS®®) and/or the quality of services they provide (MLS®®, Multiple Listing Service®®)

Listing information last updated on August 2nd, 2025 at 7:47am MDT