

# **\$379,000 - 16338 Township Road 675, Rural Lac La Biche County**

MLS® #E4416624

**\$379,000**

4 Bedroom, 3.00 Bathroom, 1,383 sqft

Rural on 2.59 Acres

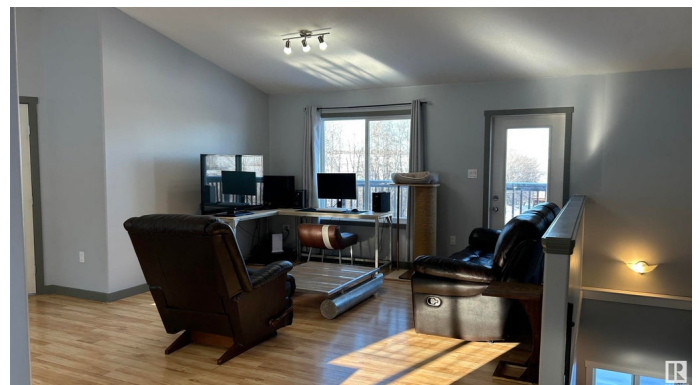
Plamondon Bay, Rural Lac La Biche County, AB

Nestled near Plamondon and close to Lac La Biche, this charming bungalow-style home offers serene living with a walk-out basement and breathtaking views of pastures in the valley below. The heated detached garage provides ample warm storage for two vehicles and outdoor toys. With an open-plan three-bedroom layout, there is plenty of opportunity for family gatherings or entertaining friends. A wrap-around deck offers ample of sunny spots all through the warmer months and the half finished basement is perfect for additional living space or a potential secondary suite. This is an outdoor enthusiast's dream, offering easy access to skidoo lng, snowshoeing, fishing, and abundant wildlife in a quiet neighborhood. If you feel it is time to escape to the country this property ticks all the boxes.

Built in 2010

## **Essential Information**

|           |           |
|-----------|-----------|
| MLS® #    | E4416624  |
| Price     | \$379,000 |
| Bedrooms  | 4         |
| Bathrooms | 3.00      |



|                |                        |
|----------------|------------------------|
| Full Baths     | 3                      |
| Square Footage | 1,383                  |
| Acres          | 2.59                   |
| Year Built     | 2010                   |
| Type           | Rural                  |
| Sub-Type       | Detached Single Family |
| Style          | Bungalow               |
| Status         | Active                 |

### Community Information

|             |                           |
|-------------|---------------------------|
| Address     | 16338 Township Road 675   |
| Area        | Rural Lac La Biche County |
| Subdivision | Plamondon Bay             |
| City        | Rural Lac La Biche County |
| County      | ALBERTA                   |
| Province    | AB                        |
| Postal Code | T0A 2T0                   |

### Amenities

|          |               |
|----------|---------------|
| Features | Ceiling 9 ft. |
|----------|---------------|

### Interior

|                   |                           |
|-------------------|---------------------------|
| Interior Features | ensuite bathroom          |
| Heating           | Forced Air-1, Natural Gas |
| Stories           | 1                         |
| Has Basement      | Yes                       |
| Basement          | Full, Partially Finished  |

### Exterior

|                   |                    |
|-------------------|--------------------|
| Exterior          | Concrete           |
| Exterior Features | See Remarks        |
| Construction      | Concrete           |
| Foundation        | Concrete Perimeter |

### Additional Information

|                |                     |
|----------------|---------------------|
| Date Listed    | December 22nd, 2024 |
| Days on Market | 177                 |
| Zoning         | Zone 60             |

DATA IS DEEMED RELIABLE BUT IS NOT GUARANTEED ACCURATE BY THE REALTORS® ASSOCIATION OF

EDMONTON. COPYRIGHT 2025 BY THE REALTORS® ASSOCIATION OF EDMONTON. ALL RIGHTS RESERVED.Trademarks are owned or controlled by the Canadian Real Estate Association (CREA) and identify real estate professionals who are members of CREA (REALTOR®, REALTORS®) and/or the quality of services they provide (MLS®, Multiple Listing Service®)

Listing information last updated on June 17th, 2025 at 3:32pm MDT