

\$0 - 7609 Henderson Way, Lacombe

MLS® #E4417277

\$0

0 Bedroom, 0.00 Bathroom,
Retail on 0.00 Acres

Lacombe West, Lacombe, AB

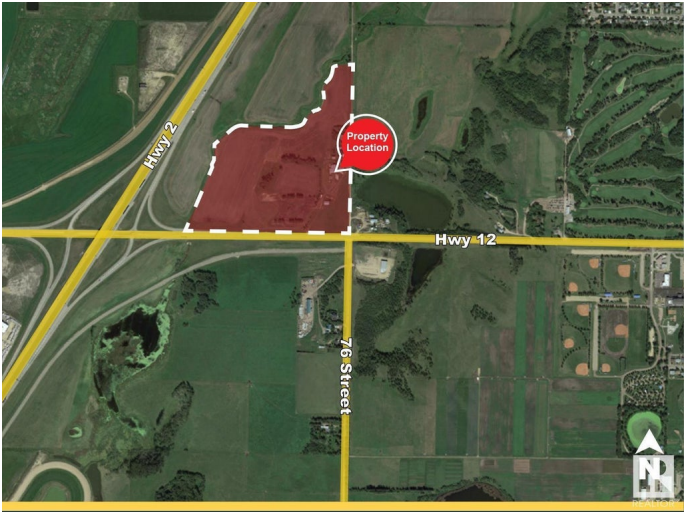
Prime Commercial Leasing Opportunity at Midway Centre. Located at the highly visible intersection of Highway 2 and the Highway 12 Overpass in Lacombe, Midway Centre offers an exceptional retail and office space opportunity. Anchored by well-established tenants including Second Cup Coffee, Edo Japan, Esso Gas Station, and a variety of other popular brands, this vibrant plaza attracts high foot traffic and ensures strong visibility for businesses. Available spaces range from 1,142 sqft to 1,274 sqft, with flexible configurations that can be combined to suit your business needs. This is an ideal location for businesses looking to join a dynamic, growing commercial community in a thriving city. Don't miss the chance to establish your business in one of Lacombe's most strategically positioned plazas.

Built in 2024

Essential Information

MLS® #	E4417277
Bathrooms	0.00
Acres	0.00
Year Built	2024
Type	Retail
Status	Active

Community Information



Address	7609 Henderson Way
Area	Lacombe
Subdivision	Lacombe West
City	Lacombe
County	ALBERTA
Province	AB
Postal Code	T4L 0K7

Exterior

Exterior	Steel Frame
Construction	Steel Frame

Additional Information

Date Listed	January 7th, 2025
Days on Market	201
Zoning	Zone RUR6

DATA IS DEEMED RELIABLE BUT IS NOT GUARANTEED ACCURATE BY THE REALTORS® ASSOCIATION OF EDMONTON. COPYRIGHT 2025 BY THE REALTORS® ASSOCIATION OF EDMONTON. ALL RIGHTS RESERVED. Trademarks are owned or controlled by the Canadian Real Estate Association (CREA) and identify real estate professionals who are members of CREA (REALTOR®, REALTORS®) and/or the quality of services they provide (MLS®, Multiple Listing Service®)

Listing information last updated on July 26th, 2025 at 10:17pm MDT