

\$899,900 - 16 Quesnell Crescent, Edmonton

MLS® #E4419889

\$899,900

3 Bedroom, 3.00 Bathroom, 2,305 sqft

Single Family on 0.00 Acres

Quesnell Heights, Edmonton, AB

This stunning, fully updated bungalow offers over 4,000 sq ft of living space on a massive 16,000 sq ft lot. Featuring vaulted ceilings and an open-concept floor plan, the main level is perfect for entertaining with large windows, hardwood floors, and a beautifully updated kitchen. The owner's suite is a luxurious retreat with vaulted ceilings, a walk-in closet, and a spa-like ensuite with dual showers. Two additional bedrooms complete the main floor. The basement offers vinyl flooring, a 4pc bathroom, a family/rec room, flex space, and a workshop. Updates include new electrical, plumbing, windows, and in-floor heating for modern comfort. Step outside to your private backyard, surrounded by mature trees and a garden, large composite deck offering plenty of space for activities and relaxation. Enjoy your hot tub after a long day. The extended 4-car tandem garage with hobby/flex space completes this exceptional home. Situated in the desirable neighborhood of Quesnell don't miss out on this rare opportunity!

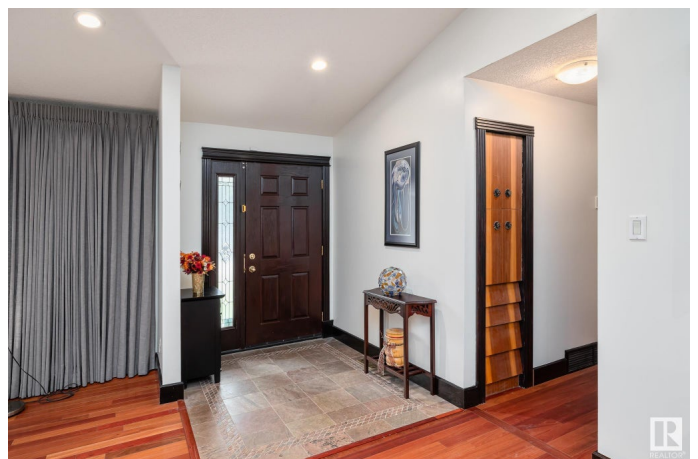
Built in 1968

Essential Information

MLS® # E4419889

Price \$899,900

Bedrooms 3



Bathrooms	3.00
Full Baths	3
Square Footage	2,305
Acres	0.00
Year Built	1968
Type	Single Family
Sub-Type	Detached Single Family
Style	Bungalow
Status	Active

Community Information

Address	16 Quesnell Crescent
Area	Edmonton
Subdivision	Quesnell Heights
City	Edmonton
County	ALBERTA
Province	AB
Postal Code	T5R 5N9

Amenities

Amenities	Air Conditioner, Deck, Detectors Smoke, Exterior Walls- 2"x6", Greenhouse, Hot Tub, Hot Water Natural Gas, Parking-Extra, Workshop
Parking	Quad or More Attached, Tandem

Interior

Interior Features	ensuite bathroom
Appliances	Dishwasher-Built-In, Dryer, Garage Opener, Refrigerator, Stove-Gas, Washer, Window Coverings, Hot Tub
Heating	Forced Air-1, In Floor Heat System, Natural Gas
Fireplace	Yes
Fireplaces	Mantel
Stories	2
Has Basement	Yes
Basement	Full, Finished

Exterior

Exterior	Wood, Stone, Vinyl
Exterior Features	Fenced, Landscaped, No Back Lane, Schools
Roof	Asphalt Shingles

Construction	Wood, Stone, Vinyl
Foundation	Concrete Perimeter

School Information

Elementary	Patricia Heights School
Middle	Laurier Heights School
High	Jasper Place

Additional Information

Date Listed	January 31st, 2025
Days on Market	90
Zoning	Zone 22

DATA IS DEEMED RELIABLE BUT IS NOT GUARANTEED ACCURATE BY THE REALTORS® ASSOCIATION OF EDMONTON. COPYRIGHT 2025 BY THE REALTORS® ASSOCIATION OF EDMONTON. ALL RIGHTS RESERVED.Trademarks are owned or controlled by the Canadian Real Estate Association (CREA) and identify real estate professionals who are members of CREA (REALTOR®, REALTORS®) and/or the quality of services they provide (MLS®, Multiple Listing Service®)

Listing information last updated on May 1st, 2025 at 8:47am MDT