

# \$1,175,000 - 10107 138 Street, Edmonton

MLS® #E4420062

**\$1,175,000**

3 Bedroom, 3.50 Bathroom, 2,045 sqft  
Single Family on 0.00 Acres

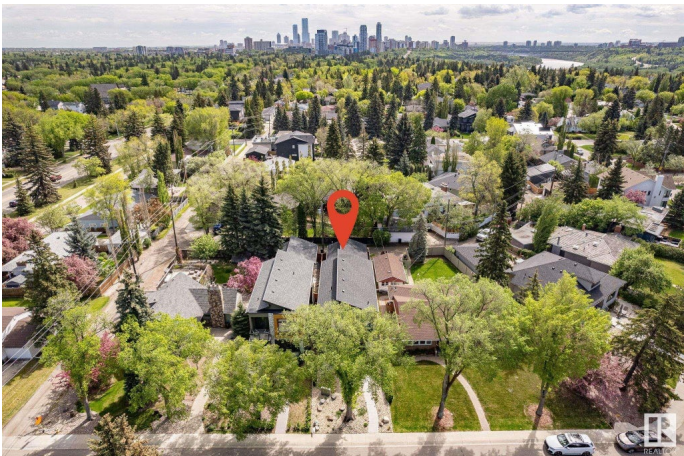
Glenora, Edmonton, AB

Located in GLENORA and steps to the river valley, schools and restaurants! Perfectly put together, this two-storey home is finished top to bottom. 10 foot ceilings and 8 foot doors. Over 2,000 sq.ft., 3 bdrms., 3 1/2 bathrooms, open kitchen, dining room and cosy family room with a 20ft. high vaulted ceiling and fireplace. Large office on the main floor. Lower floor has big bright windows and 9 foot ceilings. Heated tile floors throughout. Sunny decks and beautiful landscaping. Double, heated garage. \*Title to this property is protected by the Carruthers Caveat, re: Restrictive Covenant\*

Built in 2017

## Essential Information

MLS® #	E4420062
Price	\$1,175,000
Bedrooms	3
Bathrooms	3.50
Full Baths	3
Half Baths	1
Square Footage	2,045
Acres	0.00
Year Built	2017
Type	Single Family
Sub-Type	Detached Single Family



Style	2 Storey
Status	Active

### Community Information

Address	10107 138 Street
Area	Edmonton
Subdivision	Glenora
City	Edmonton
County	ALBERTA
Province	AB
Postal Code	T5N 2H8

### Amenities

Amenities	Deck, No Smoking Home, Vaulted Ceiling, Natural Gas BBQ Hookup
Parking	Double Garage Detached, Heated, Rear Drive Access

### Interior

Interior Features	ensuite bathroom
Appliances	Air Conditioning-Central, Dishwasher-Built-In, Dryer, Fan-Ceiling, Garage Control, Garage Opener, Garburator, Hood Fan, Oven-Microwave, Refrigerator, Stove-Gas, Washer, Window Coverings, Wine/Beverage Cooler, Garage Heater
Heating	Forced Air-1, Natural Gas
Fireplace	Yes
Fireplaces	Mantel, Stone Facing
Stories	3
Has Basement	Yes
Basement	Full, Finished

### Exterior

Exterior	Wood, Composition, Stone, Stucco
Exterior Features	Fenced, Low Maintenance Landscape, Paved Lane, Playground Nearby, Public Transportation, Schools, Shopping Nearby
Roof	Asphalt Shingles
Construction	Wood, Composition, Stone, Stucco
Foundation	Concrete Perimeter

### Additional Information

Date Listed	February 2nd, 2025
Days on Market	135

## Zoning

## Zone 11

DATA IS DEEMED RELIABLE BUT IS NOT GUARANTEED ACCURATE BY THE REALTORS® ASSOCIATION OF EDMONTON. COPYRIGHT 2025 BY THE REALTORS® ASSOCIATION OF EDMONTON. ALL RIGHTS RESERVED. Trademarks are owned or controlled by the Canadian Real Estate Association (CREA) and identify real estate professionals who are members of CREA (REALTOR®, REALTORS®) and/or the quality of services they provide (MLS®, Multiple Listing Service®)

Listing information last updated on June 16th, 2025 at 10:02pm MDT