

\$589,555 - 18929 99a Avenue, Edmonton

MLS® #E4420429

\$589,555

9 Bedroom, 4.00 Bathroom, 4,146 sqft

Single Family on 0.00 Acres

La Perle, Edmonton, AB

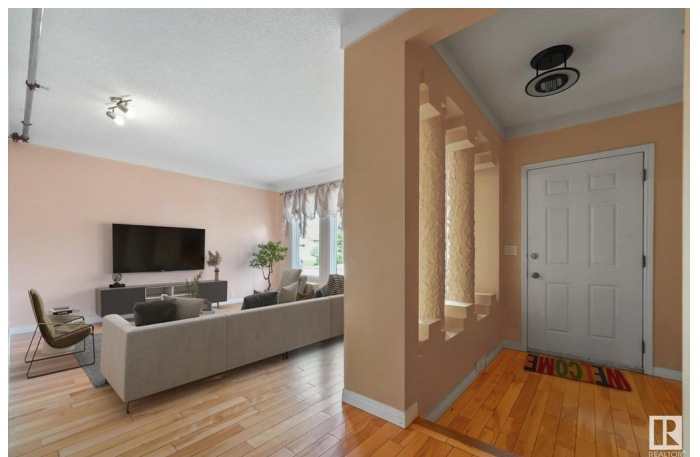
9 Bedroom Home with an ELEVATOR inside!!
Less than 5 mins to WEST EDMONTON MALL & 9 mins to Misericordia Hospital! This MASSIVE home offers almost 4,600 sqft of fully finished living space (including the fully finished basement). Located in a well-established neighborhood, and close proximity to schools, park, shopping and public transit, this home is perfect for a growing family or running a homecare business. Featuring 9 bedrooms, 4 large bathrooms designed for special needs (wheelchair accessible), 2 spacious living rooms, a sunroom, 2 utility rooms, a large attic, a den, & an elevator to access the second floor, this property is ideal for multigenerational living. Tons of money has been spent on the sprinkler system, and revamping the home to run a certified business. Fully fenced yard, and if you have a bigger truck or SUV, you have a double-oversized attached garage, plus a huge driveway for RV storage. Amazing location, great price, don't miss the opportunity to make this home yours!

Built in 1982

Essential Information

MLS® # E4420429

Price \$589,555



Bedrooms	9
Bathrooms	4.00
Full Baths	4
Square Footage	4,146
Acres	0.00
Year Built	1982
Type	Single Family
Sub-Type	Detached Single Family
Style	2 Storey
Status	Active

Community Information

Address	18929 99a Avenue
Area	Edmonton
Subdivision	La Perle
City	Edmonton
County	ALBERTA
Province	AB
Postal Code	T5T 3M9

Amenities

Amenities	Sunroom
Parking Spaces	4
Parking	Double Garage Attached

Interior

Appliances	See Remarks
Heating	Forced Air-1, Natural Gas
Fireplace	Yes
Fireplaces	Mantel
Stories	4
Has Basement	Yes
Basement	Full, Finished

Exterior

Exterior	Wood, Stucco
Exterior Features	Fenced, Flat Site, Landscaped, Playground Nearby, Public Transportation, Schools, Shopping Nearby
Roof	Asphalt Shingles

Construction	Wood, Stucco
Foundation	Concrete Perimeter

Additional Information

Date Listed	February 5th, 2025
Days on Market	85
Zoning	Zone 20

DATA IS DEEMED RELIABLE BUT IS NOT GUARANTEED ACCURATE BY THE REALTORS® ASSOCIATION OF EDMONTON. COPYRIGHT 2025 BY THE REALTORS® ASSOCIATION OF EDMONTON. ALL RIGHTS RESERVED.Trademarks are owned or controlled by the Canadian Real Estate Association (CREA) and identify real estate professionals who are members of CREA (REALTOR®, REALTORS®) and/or the quality of services they provide (MLS®, Multiple Listing Service®)

Listing information last updated on May 1st, 2025 at 7:47pm MDT