

\$149,900 - Hwy 633 Rr21, Rural Lac Ste. Anne County

MLS® #E4425358

\$149,900

0 Bedroom, 0.00 Bathroom,
Rural on 5.36 Acres

None, Rural Lac Ste. Anne County, AB

Private partly treed 5.36 acres located not in subdivision 3 KM from Onoway with K to grade 12, all services & amenities. Build your dream home or shop with living space above. .Power & gas at property line. Quiet, private and clean country living!

Essential Information

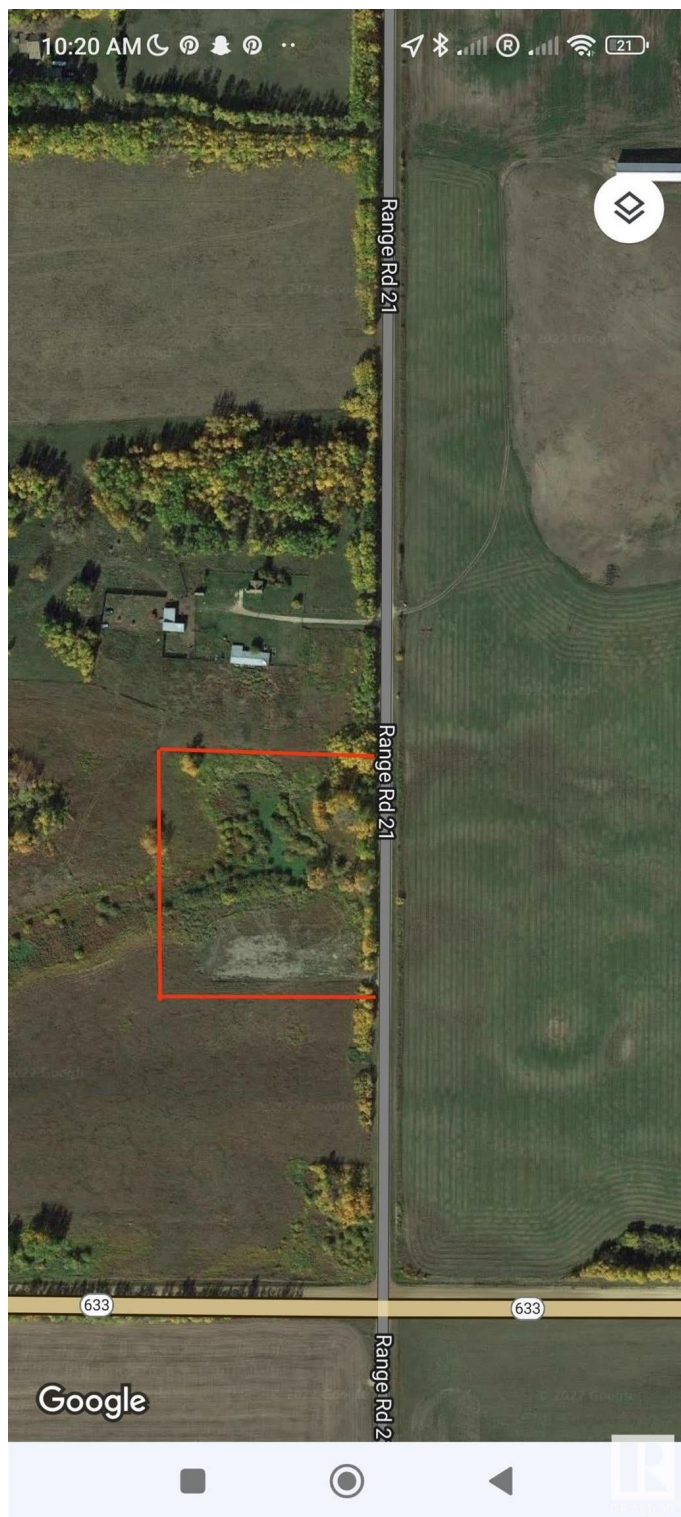
MLS® #	E4425358
Price	\$149,900
Bathrooms	0.00
Acres	5.36
Type	Rural
Sub-Type	Vacant Lot/Land
Status	Active

Community Information

Address	Hwy 633 Rr21
Area	Rural Lac Ste. Anne County
Subdivision	None
City	Rural Lac Ste. Anne County
County	ALBERTA
Province	AB
Postal Code	T0E 1V0

Exterior

Exterior Features Treed Lot, Partially Fenced



Additional Information

Date Listed	March 12th, 2025
Days on Market	147
Zoning	Zone 70



DATA IS DEEMED RELIABLE BUT IS NOT GUARANTEED ACCURATE BY THE REALTORS® ASSOCIATION OF EDMONTON. COPYRIGHT 2025 BY THE REALTORS® ASSOCIATION OF EDMONTON. ALL RIGHTS RESERVED.Trademarks are owned or controlled by the Canadian Real Estate Association (CREA) and identify real estate professionals who are members of CREA (REALTOR®, REALTORS®) and/or the quality of services they provide (MLS®, Multiple Listing Service®)

Listing information last updated on August 6th, 2025 at 7:02am MDT

