

\$549,888 - 891 Lee Ridge Road, Edmonton

MLS® #E4425569

\$549,888

4 Bedroom, 3.50 Bathroom, 1,801 sqft

Single Family on 0.00 Acres

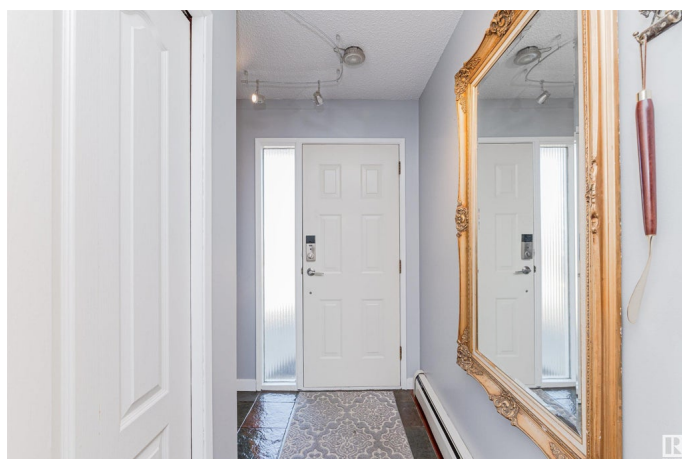
Lee Ridge, Edmonton, AB

Welcome to this stunning custom-built two-story home nestled in a quiet cul-de-sac on a spacious pie-shaped lot. This meticulously maintained property features a large kitchen, formal dining room, and beautifully finished basement, offering ample space for both relaxation and entertainment. Enjoy the convenience of smart home technology with Wi-Fi-controlled locks, lights, and thermostats, plus the comfort of four-zone baseboard water heating, a wood-burning fireplace insert, and AC in the bedroom. The home boasts luxurious finishes like engineered walnut and Merbau hardwood flooring, slate, along with modern amenities such as a wet bar, wine fridge, built-in natural gas BBQ, and a reinforced rooftop patio previously equipped for a hot tub. The heated garage includes an epoxy floor, and the property is equipped with new windows, a new water heater, and newer shingles. This is a rare gem you won't want to miss!

Built in 1973

Essential Information

MLS® #	E4425569
Price	\$549,888
Bedrooms	4
Bathrooms	3.50



Full Baths	3
Half Baths	1
Square Footage	1,801
Acres	0.00
Year Built	1973
Type	Single Family
Sub-Type	Detached Single Family
Style	2 Storey
Status	Active

Community Information

Address	891 Lee Ridge Road
Area	Edmonton
Subdivision	Lee Ridge
City	Edmonton
County	ALBERTA
Province	AB
Postal Code	T6K 0R1

Amenities

Amenities	Air Conditioner, Deck, Detectors Smoke, Front Porch, No Smoking Home, Patio, Vinyl Windows
Parking	Double Garage Attached, Over Sized

Interior

Interior Features	ensuite bathroom
Appliances	Dishwasher-Built-In, Dryer, Freezer, Garage Control, Garage Opener, Hood Fan, Oven-Microwave, Refrigerator, Stove-Electric, Washer, Garage Heater
Heating	Baseboard, Natural Gas
Fireplace	Yes
Fireplaces	Insert
Stories	3
Has Basement	Yes
Basement	Full, Finished

Exterior

Exterior	Wood, Stone, Stucco
Exterior Features	Fenced, Landscaped, Picnic Area, Playground Nearby, Public

	Transportation, Schools, Shopping Nearby, View Downtown
Roof	Asphalt Shingles
Construction	Wood, Stone, Stucco
Foundation	Concrete Perimeter

Additional Information

Date Listed	March 13th, 2025
Days on Market	50
Zoning	Zone 29

DATA IS DEEMED RELIABLE BUT IS NOT GUARANTEED ACCURATE BY THE REALTORS® ASSOCIATION OF EDMONTON. COPYRIGHT 2025 BY THE REALTORS® ASSOCIATION OF EDMONTON. ALL RIGHTS RESERVED. Trademarks are owned or controlled by the Canadian Real Estate Association (CREA) and identify real estate professionals who are members of CREA (REALTOR®, REALTORS®) and/or the quality of services they provide (MLS®, Multiple Listing Service®)

Listing information last updated on May 2nd, 2025 at 5:47pm MDT