

\$849,900 - 605 Dalhousie Crescent, Edmonton

MLS® #E4426575

\$849,900

3 Bedroom, 2.50 Bathroom, 2,024 sqft

Single Family on 0.00 Acres

Donsdale, Edmonton, AB

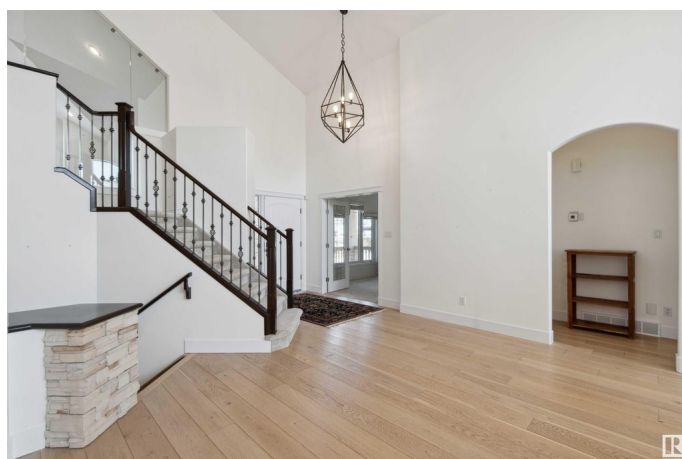
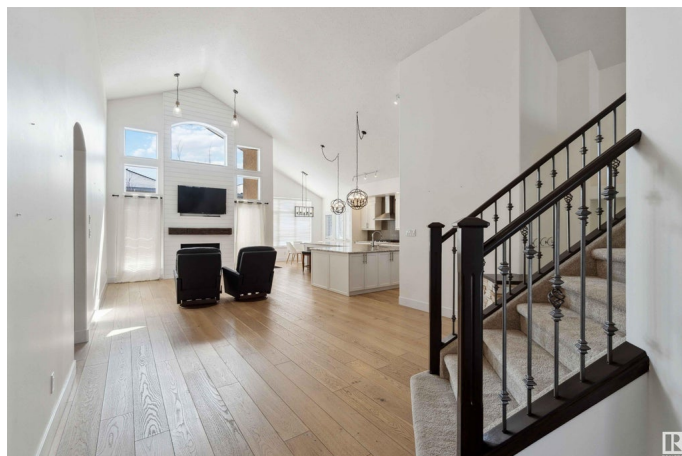
This beautifully renovated 2,023 sqft bungalow in Donsdale features 3 bedrooms and 3 bathrooms, offering modern, open-concept living. The main floor has been extensively updated, creating a more spacious layout. The chef's dream kitchen boasts an expanded layout, a walk-in pantry, sleek S/S appliances, and a massive island. You'll also find a den, airy living/dining room, and soaring ceilings on the main level. The Primary Bedroom offers a luxurious ensuite boasting dual sinks, a freestanding tub, separate shower, and get ready area. A glass wall separates the upstairs loft to maintain light flow while minimizing sound. Above the garage is a tech corner and a spacious bonus room. The basement includes two large bedrooms with walk-in closets, a full bath, and laundry room, and separate gym with glass walls and rubber flooring. The Outdoor oasis offers a private composite deck, landscaping & a storage shed. Close to amenities, transit, and the Wedgewood Ravine. All this home needs is YOU!

Built in 2001

Essential Information

MLS® # E4426575

Price \$849,900



| | |
|----------------|------------------------|
| Bedrooms | 3 |
| Bathrooms | 2.50 |
| Full Baths | 2 |
| Half Baths | 1 |
| Square Footage | 2,024 |
| Acres | 0.00 |
| Year Built | 2001 |
| Type | Single Family |
| Sub-Type | Detached Single Family |
| Style | Bungalow |
| Status | Active |

Community Information

| | |
|-------------|------------------------|
| Address | 605 Dalhousie Crescent |
| Area | Edmonton |
| Subdivision | Donsdale |
| City | Edmonton |
| County | ALBERTA |
| Province | AB |
| Postal Code | T6M 2T5 |

Amenities

| | |
|-----------|---|
| Amenities | Air Conditioner, Deck, Detectors Smoke, Dog Run-Fenced In, No Smoking Home, Smart/Program. Thermostat |
| Parking | Double Garage Attached |

Interior

| | |
|-------------------|--|
| Interior Features | ensuite bathroom |
| Appliances | Dishwasher-Built-In, Dryer, Garage Control, Garage Opener, Hood Fan, Oven-Built-In, Oven-Microwave, Refrigerator, Stove-Countertop Gas, Washer, Window Coverings |
| Heating | Forced Air-1, Natural Gas |
| Fireplace | Yes |
| Fireplaces | Mantel, See Remarks |
| Stories | 2 |
| Has Basement | Yes |
| Basement | Full, Finished |

Exterior

| | |
|-------------------|--|
| Exterior | Wood, Stone, Stucco |
| Exterior Features | Fenced, Landscaped, Park/Reserve, Playground Nearby, Public Transportation, Schools, Shopping Nearby |
| Roof | Cedar Shakes |
| Construction | Wood, Stone, Stucco |
| Foundation | Concrete Perimeter |

School Information

| | |
|------------|-----------------------|
| Elementary | Centennial School |
| Middle | S. Bruce Smith School |
| High | Jasper Place School |

Additional Information

| | |
|----------------|------------------|
| Date Listed | March 19th, 2025 |
| Days on Market | 43 |
| Zoning | Zone 20 |
| HOA Fees | 407.74 |
| HOA Fees Freq. | Annually |

DATA IS DEEMED RELIABLE BUT IS NOT GUARANTEED ACCURATE BY THE REALTORS® ASSOCIATION OF EDMONTON. COPYRIGHT 2025 BY THE REALTORS® ASSOCIATION OF EDMONTON. ALL RIGHTS RESERVED. Trademarks are owned or controlled by the Canadian Real Estate Association (CREA) and identify real estate professionals who are members of CREA (REALTOR®, REALTORS®) and/or the quality of services they provide (MLS®, Multiple Listing Service®)

Listing information last updated on May 1st, 2025 at 5:32am MDT