

\$619,000 - 403 Lakewood Way, Cold Lake

MLS® #E4426795

\$619,000

5 Bedroom, 3.00 Bathroom, 1,441 sqft
Single Family on 0.00 Acres

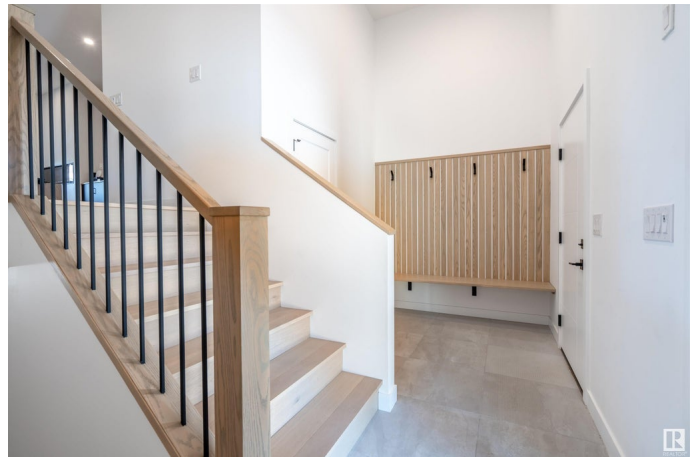
Lakewood Estates, Cold Lake, AB

Custom contemporary bi-level by Classic Homes in Lakewood Estates! 5 bedroom and 3 bathroom home featuring high end finishes inside and out. Step inside a large entryway complete with walk-in closet and custom bench - rare features for a bi-level! Up to the main level, you will find Kitchen cabinetry by Bordeleau Custom Cabinets, engineered hardwood, 9' ceilings, custom fireplace, upgraded triple pane windows with luxury window coverings, ensuite with custom shower & tub and built-in storage throughout. Downstairs you will find a large rec space with built-in bar, 2 bedrooms and a full bathroom, all with luxury vinyl plank flooring. Upgraded mechanical system includes boiler with a holding tank & closed loop underslab. An Oversized heated double garage allows for great storage. Exterior includes covered rear deck, front south exposure patio, James Hardie siding with metal & stone accents and a view of greenspace across the street. Fantastic location in a beautiful neighbourhood!

Built in 2022

Essential Information

MLS® #	E4426795
Price	\$619,000



Bedrooms	5
Bathrooms	3.00
Full Baths	3
Square Footage	1,441
Acres	0.00
Year Built	2022
Type	Single Family
Sub-Type	Detached Single Family
Style	Bi-Level
Status	Active

Community Information

Address	403 Lakewood Way
Area	Cold Lake
Subdivision	Lakewood Estates
City	Cold Lake
County	ALBERTA
Province	AB
Postal Code	T9M 0K7

Amenities

Amenities	Bar, Ceiling 9 ft., Deck, Parking-Extra, Patio, 9 ft. Basement Ceiling
Parking	Double Garage Attached, Heated

Interior

Interior Features	ensuite bathroom
Appliances	Dishwasher-Built-In, Dryer, Hood Fan, Oven-Microwave, Refrigerator, Stove-Electric, Washer, Window Coverings, Wine/Beverage Cooler
Heating	Forced Air-1, In Floor Heat System, Natural Gas
Stories	2
Has Basement	Yes
Basement	Full, Finished

Exterior

Exterior	Wood, Fiber Cement
Exterior Features	Fenced, Landscaped, Playground Nearby
Roof	Asphalt Shingles
Construction	Wood, Fiber Cement
Foundation	Concrete Perimeter

Additional Information

Date Listed	March 21st, 2025
Days on Market	42
Zoning	Zone 60

DATA IS DEEMED RELIABLE BUT IS NOT GUARANTEED ACCURATE BY THE REALTORS® ASSOCIATION OF EDMONTON. COPYRIGHT 2025 BY THE REALTORS® ASSOCIATION OF EDMONTON. ALL RIGHTS RESERVED.Trademarks are owned or controlled by the Canadian Real Estate Association (CREA) and identify real estate professionals who are members of CREA (REALTOR®, REALTORS®) and/or the quality of services they provide (MLS®, Multiple Listing Service®)

Listing information last updated on May 2nd, 2025 at 9:18am MDT