

\$750,000 - 4206 51 Avenue, Vegreville

MLS® #E4426945

\$750,000

0 Bedroom, 0.00 Bathroom,
Retail on 0.00 Acres

Vegreville, Vegreville, AB

Over 7000sq.ft of commercial space on 3.26 acres of land. Located on the East Side of Vegreville just off Hwy 16A. The Retail Showroom is 5676 sq.ft and the warehouse/storage having 1656sq.ft. there is also a mezzanine office/storage with 482 sq. ft. The land is fenced and has several storage spaces. The main building has a ceiling height of 12 ft. and concrete slab flooring. West side of building is paved for parking the east side has the additional acres for storage(compact gravel) This building is in a prime location for a new business venture.

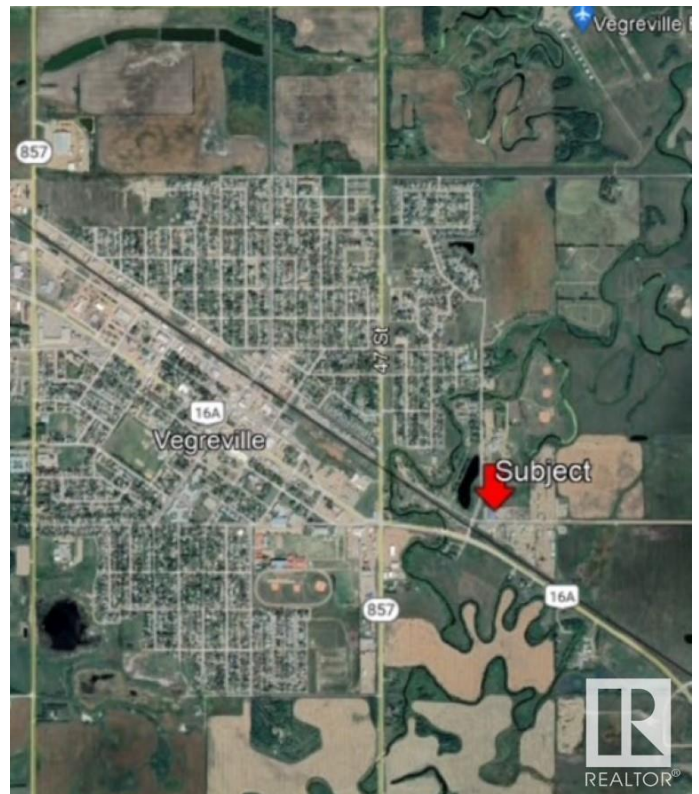
Built in 1970

Essential Information

| | |
|------------|-----------|
| MLS® # | E4426945 |
| Price | \$750,000 |
| Bathrooms | 0.00 |
| Acres | 0.00 |
| Year Built | 1970 |
| Type | Retail |
| Status | Active |

Community Information

| | |
|-------------|----------------|
| Address | 4206 51 Avenue |
| Area | Vegreville |
| Subdivision | Vegreville |



| | |
|-------------|------------|
| City | Vegreville |
| County | ALBERTA |
| Province | AB |
| Postal Code | T9C 1V5 |

Exterior

| | |
|--------------|-------|
| Exterior | Metal |
| Construction | Metal |

Additional Information

| | |
|----------------|------------------|
| Date Listed | March 20th, 2025 |
| Days on Market | 135 |
| Zoning | Zone 60 |

DATA IS DEEMED RELIABLE BUT IS NOT GUARANTEED ACCURATE BY THE REALTORS® ASSOCIATION OF EDMONTON. COPYRIGHT 2025 BY THE REALTORS® ASSOCIATION OF EDMONTON. ALL RIGHTS RESERVED. Trademarks are owned or controlled by the Canadian Real Estate Association (CREA) and identify real estate professionals who are members of CREA (REALTOR®, REALTORS®) and/or the quality of services they provide (MLS®, Multiple Listing Service®)

Listing information last updated on August 2nd, 2025 at 2:47pm MDT