

\$1,700,000 - 25 52258 Rge Road 231, Rural Strathcona County

MLS® #E4428433

\$1,700,000

4 Bedroom, 4.50 Bathroom, 3,334 sqft

Rural on 2.01 Acres

Windsor Estates, Rural Strathcona County, AB

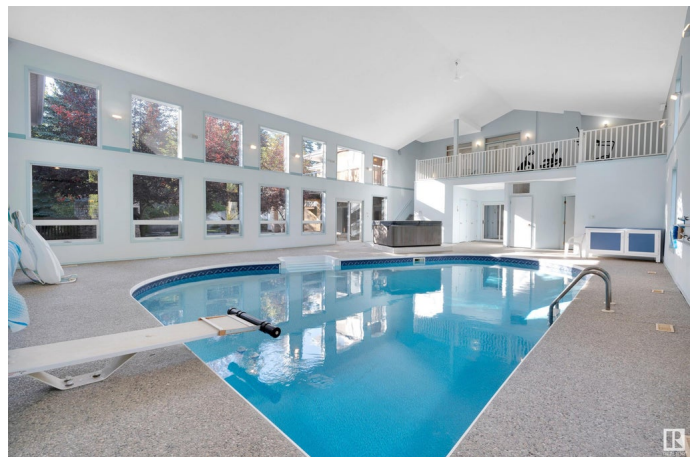
ENTERTAINERS DREAM HOME, with over 6900sqft of SPACE including INDOOR POOL, 4 bedrooms, 6.5 baths, plus 1800sqft with TRIPLE garage & 54x28 SHOP, sitting on a PRIVATE & PICTURESQUE 2.01 acres in the desirable community of Windsor Estates mins to Sherwood Park. A grande entrance invites you into find a family sized kitchen that offers an abundance of cabinets, newer appliances & quartz island that over looks the living rm with fireplace & updated hardwood throughout the dining rm & den (could be main floor bdrm). 3pc bath, 1/2 bath & mud room compliment the layout. Open the patio door & watch the kids in the pool! Moving upstairs you will find a king sized primary suite with balcony, huge WI closet & luxurious ensuite. 2 bdrms, 1 with WI closet, 1 with dual closets, laundry rm & 4pc bath complete the upper level. The WALKOUT basement is sure to IMPRESS, with rec rm complete with bar & fireplace plus access to the gorgeous patio with BI GAS BBQ GRILL & pool. 4th bdrm, den & bath complete this MUST SEE HOME.

Built in 1994

Essential Information

MLS® #

E4428433



| | |
|----------------|------------------------|
| Price | \$1,700,000 |
| Bedrooms | 4 |
| Bathrooms | 4.50 |
| Full Baths | 4 |
| Half Baths | 1 |
| Square Footage | 3,334 |
| Acres | 2.01 |
| Year Built | 1994 |
| Type | Rural |
| Sub-Type | Detached Single Family |
| Style | 2 Storey |
| Status | Active |

Community Information

| | |
|-------------|-------------------------|
| Address | 25 52258 Rge Road 231 |
| Area | Rural Strathcona County |
| Subdivision | Windsor Estates |
| City | Rural Strathcona County |
| County | ALBERTA |
| Province | AB |
| Postal Code | T8B 1M8 |

Amenities

| | |
|----------|---|
| Features | Air Conditioner, Barbecue-Built-In, Deck, Hot Tub, Parking-Extra, Patio, Pool-Indoor, R.V. Storage, Sauna; Swirlpool; Steam, Sprinkler Sys-Underground, Vinyl Windows, Walkout Basement, Wet Bar, See Remarks |
|----------|---|

Interior

| | |
|-------------------|---------------------------|
| Interior Features | ensuite bathroom |
| Heating | Forced Air-1, Natural Gas |
| Fireplace | Yes |
| Stories | 3 |
| Has Basement | Yes |
| Basement | Full, Finished |

Exterior

| | |
|-------------------|--|
| Exterior | Wood |
| Exterior Features | Cul-De-Sac, Landscaped, Private Setting, Schools, Shopping Nearby, |

| | |
|--------------|------------------------|
| | Treed Lot, See Remarks |
| Construction | Wood |
| Foundation | Concrete Perimeter |

Additional Information

| | |
|----------------|-----------------|
| Date Listed | April 1st, 2025 |
| Days on Market | 77 |
| Zoning | Zone 80 |

DATA IS DEEMED RELIABLE BUT IS NOT GUARANTEED ACCURATE BY THE REALTORS® ASSOCIATION OF EDMONTON. COPYRIGHT 2025 BY THE REALTORS® ASSOCIATION OF EDMONTON. ALL RIGHTS RESERVED. Trademarks are owned or controlled by the Canadian Real Estate Association (CREA) and identify real estate professionals who are members of CREA (REALTOR®, REALTORS®) and/or the quality of services they provide (MLS®, Multiple Listing Service®)

Listing information last updated on June 17th, 2025 at 1:17pm MDT