

\$289,000 - 4019 Hwy 633, Rural Lac Ste. Anne County

MLS® #E4428652

\$289,000

2 Bedroom, 1.00 Bathroom, 902 sqft

Rural on 4.47 Acres

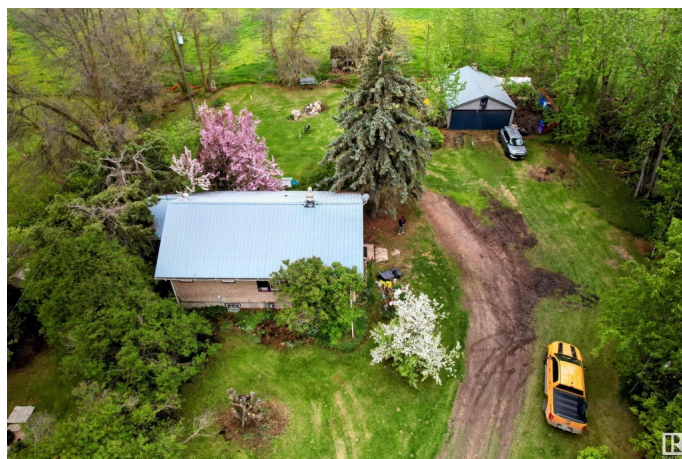
None, Rural Lac Ste. Anne County, AB

This charming 1935 bungalow sits on a picturesque 4.47 acre parcel Hobby Farm, offering a peaceful retreat with plenty of space to enjoy nature. This home features two cozy bedrooms on the main floor, complemented by Livingroom, dining room kitchen and 4 piece bath. The unfinished basement provides an opportunity for additional storage or future development. With mature trees, open space, and endless possibilities, this property is perfect for those looking to embrace country living while still being in reach of modern amenities. Whether you're seeking your private getaway or a place to build your dream, this timeless bungalow is full of potential.

Built in 1935

Essential Information

MLS® #	E4428652
Price	\$289,000
Bedrooms	2
Bathrooms	1.00
Full Baths	1
Square Footage	902
Acres	4.47
Year Built	1935
Type	Rural
Sub-Type	Detached Single Family



Style	Bungalow
Status	Active

Community Information

Address	4019 Hwy 633
Area	Rural Lac Ste. Anne County
Subdivision	None
City	Rural Lac Ste. Anne County
County	ALBERTA
Province	AB
Postal Code	T0E 0A1

Amenities

Features	No Smoking Home
----------	-----------------

Interior

Heating	Forced Air-1, Natural Gas
Stories	1
Has Basement	Yes
Basement	Full, Unfinished

Exterior

Exterior	Wood
Exterior Features	Fenced
Construction	Wood
Foundation	Block, Brick, Stone

Additional Information

Date Listed	April 2nd, 2025
Days on Market	76
Zoning	Zone 70

DATA IS DEEMED RELIABLE BUT IS NOT GUARANTEED ACCURATE BY THE REALTORS® ASSOCIATION OF EDMONTON. COPYRIGHT 2025 BY THE REALTORS® ASSOCIATION OF EDMONTON. ALL RIGHTS RESERVED. Trademarks are owned or controlled by the Canadian Real Estate Association (CREA) and identify real estate professionals who are members of CREA (REALTOR®, REALTORS®) and/or the quality of services they provide (MLS®, Multiple Listing Service®)

Listing information last updated on June 17th, 2025 at 7:02pm MDT