

# \$2,000 - 9922 111 Street, Edmonton

MLS® #E4429831

**\$2,000**

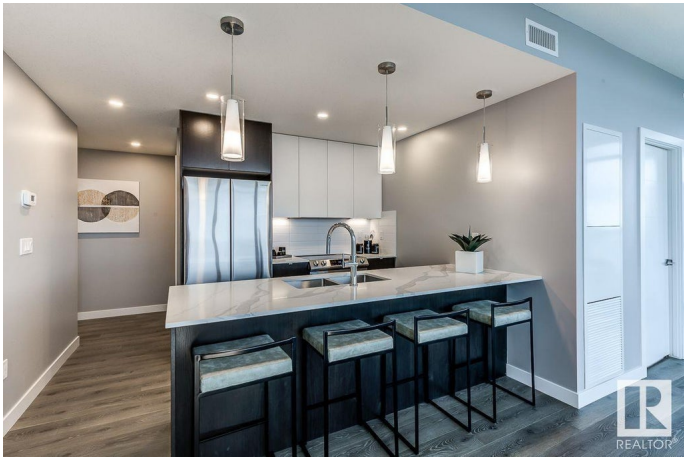
2 Bedroom, 1.00 Bathroom, 858 sqft  
Rental on 0.00 Acres

W&hkw&ant&win, Edmonton, AB

Visit the Listing Brokerage (and/or listing REALTOR®) website to obtain additional information. For those in search of an elevated urban escape with a promise of continuous discovery, look no further than The View. Just steps away from the LRT, allowing easy access to the downtown core and the University of Alberta, The View reframes everyday living with vibrant connections and amenities that spark new, unexpected outlooks on a life well-lived. Discover a place where every detail is designed to elevate your lifestyle and inspire your senses. Unit Features: - Insuite Laundry - Stainless steel appliances (Dishwasher, Microwave, Stove, Fridge) - Private Balconies Building Amenities: - Fitness Room - Concierge - Rooftop Terrace - Luxury Lounge - Bicycle Storage - EV Charging Stations

## Essential Information

MLS® #	E4429831
Price	\$2,000
Bedrooms	2
Bathrooms	1.00
Full Baths	1
Square Footage	858
Acres	0.00
Type	Rental



Style	Single Level Apartment
Status	Active

**Community Information**

Address	9922 111 Street
Area	Edmonton
Subdivision	W&hkw&antwin
City	Edmonton
County	ALBERTA
Province	AB
Postal Code	T5K 1K2

**Amenities**

Parking	Underground
---------	-------------

**Interior**

Appliances	Dishwasher-Built-In, Oven-Microwave, Refrigerator, Stove-Countertop Gas
------------	---

**Additional Information**

Date Listed	April 9th, 2025
Days on Market	116
Zoning	Zone 12

DATA IS DEEMED RELIABLE BUT IS NOT GUARANTEED ACCURATE BY THE REALTORS® ASSOCIATION OF EDMONTON. COPYRIGHT 2025 BY THE REALTORS® ASSOCIATION OF EDMONTON. ALL RIGHTS RESERVED.Trademarks are owned or controlled by the Canadian Real Estate Association (CREA) and identify real estate professionals who are members of CREA (REALTOR®, REALTORS®) and/or the quality of services they provide (MLS®, Multiple Listing Service®)

Listing information last updated on August 3rd, 2025 at 2:02am MDT