

\$79,900 - 14 562115 Rge Rd 114, Rural Two Hills County

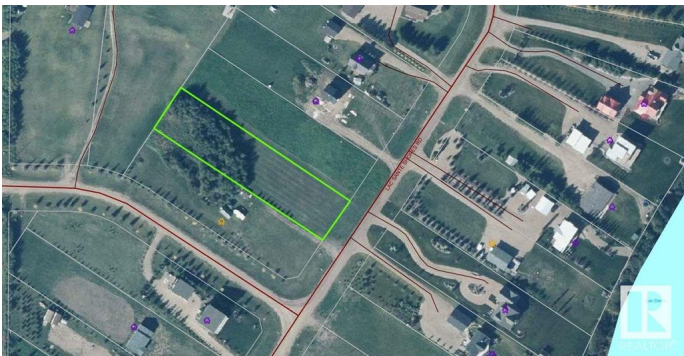
MLS® #E4429892

\$79,900

0 Bedroom, 0.00 Bathroom,
Rural on 1.00 Acres

Lac Sante (Two Hills County), Rural Two Hills County, AB

Create Your Perfect Lakeside Escape Nestled in the serene community of Lac Sante Shores, this spacious 1-acre lot is ready for your dream retreat. Whether you're envisioning peaceful summer days with a cool drink in hand or cozy evenings around the campfire watching the sunset over the lake, this is the place to make lasting memories. With crystal-clear, spring-fed waters reaching depths of up to 80 feet, Lac Sante is a haven for water sports enthusiasts. Prefer dry land? You're just minutes away from Two Hills or St. Paul golf courses. Lake access is conveniently closeâ€”just a short stroll from the property. The lot comes with power and natural gas at the property line, giving you a head start on your plansâ€”whether it's a cabin or your future home. Donâ€™t miss your chance to own a slice of lake life. Summer is just around the corner!



Essential Information

MLS® #	E4429892
Price	\$79,900
Bathrooms	0.00
Acres	1.00
Type	Rural
Sub-Type	Vacant Lot/Land
Status	Active

Community Information

Address	14 562115 Rge Rd 114
Area	Rural Two Hills County
Subdivision	Lac Sante (Two Hills County)
City	Rural Two Hills County
County	ALBERTA
Province	AB
Postal Code	T0B 4K0

Exterior

Exterior Features Flat Site, Lake View, Level Land, No Through Road

Additional Information

Date Listed	April 8th, 2025
Days on Market	23
Zoning	Zone 60

DATA IS DEEMED RELIABLE BUT IS NOT GUARANTEED ACCURATE BY THE REALTORS® ASSOCIATION OF EDMONTON. COPYRIGHT 2025 BY THE REALTORS® ASSOCIATION OF EDMONTON. ALL RIGHTS RESERVED. Trademarks are owned or controlled by the Canadian Real Estate Association (CREA) and identify real estate professionals who are members of CREA (REALTOR®, REALTORS®) and/or the quality of services they provide (MLS®, Multiple Listing Service®)

Listing information last updated on May 1st, 2025 at 9:17pm MDT