

# \$180,000 - 1 54114 Rge Rd 52, Rural Lac Ste. Anne County

MLS® #E4430033

**\$180,000**

2 Bedroom, 1.00 Bathroom, 727 sqft

Rural on 0.15 Acres

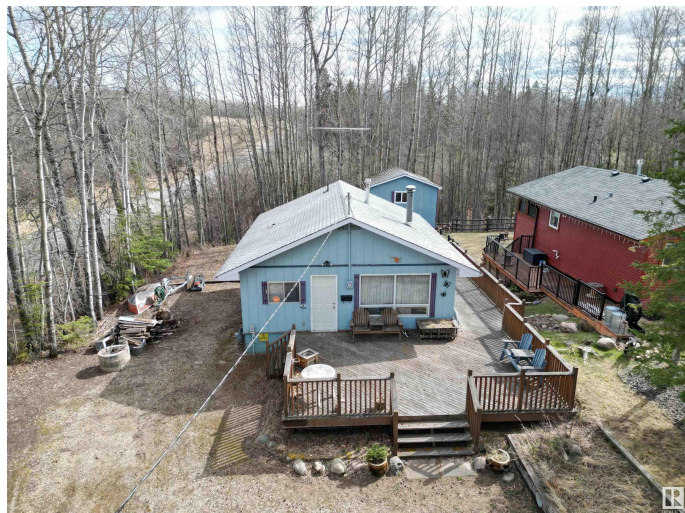
Bay Bridge Estates, Rural Lac Ste. Anne County, AB

Located in Bay Bridge Estates, this well-kept 2-bed, 1-bath cabin is the perfect 3-season retreat. Built in 1978 and still owned by the original builder, it sits on a private, treed corner lot just steps from the lake. Enjoy a spacious cedar deck, ample parking, and a peaceful setting ideal for summer getaways. This property comes fully furnished, and includes a small boat, trailer, and motor—everything you need to start making memories right away. A detached workshop with an upper-level bunkhouse offers extra space for guests or storage, plus there's a rear crawl space for added convenience. Whether you're looking to relax or explore the lake, this turn-key cabin is ready for its next chapter of summer adventures.

Built in 1978

## Essential Information

MLS® #	E4430033
Price	\$180,000
Bedrooms	2
Bathrooms	1.00
Full Baths	1
Square Footage	727



Acres	0.15
Year Built	1978
Type	Rural
Sub-Type	Detached Single Family
Style	Bungalow
Status	Active

### Community Information

Address	1 54114 Rge Rd 52
Area	Rural Lac Ste. Anne County
Subdivision	Bay Bridge Estates
City	Rural Lac Ste. Anne County
County	ALBERTA
Province	AB
Postal Code	T0E 1H0

### Amenities

Features	Crawl Space, Front Porch
----------	--------------------------

### Interior

Heating	Forced Air-1, Natural Gas
Fireplace	Yes
Stories	1
Has Basement	Yes
Basement	None, No Basement

### Exterior

Exterior	Wood
Exterior Features	Corner Lot, Landscaped, Treed Lot
Construction	Wood
Foundation	Piling

### Additional Information

Date Listed	April 10th, 2025
Days on Market	118
Zoning	Zone 75

DATA IS DEEMED RELIABLE BUT IS NOT GUARANTEED ACCURATE BY THE REALTORS® ASSOCIATION OF EDMONTON. COPYRIGHT 2025 BY THE REALTORS® ASSOCIATION OF EDMONTON. ALL RIGHTS RESERVED. Trademarks are owned or controlled by the Canadian Real Estate Association (CREA) and identify real estate professionals who are members of CREA (REALTOR®, REALTORS®) and/or the quality of services they

provide (MLS®®, Multiple Listing Service®®)  
Listing information last updated on August 6th, 2025 at 4:32am MDT