

Courtesy Of Brian C Cyr Of RE/MAX Elite

\$1,589,000 - 9 54231 Rge Road 250, Rural Sturgeon County

MLS® #E4432084

\$1,589,000

5 Bedroom, 3.50 Bathroom, 2,560 sqft

Rural on 1.54 Acres

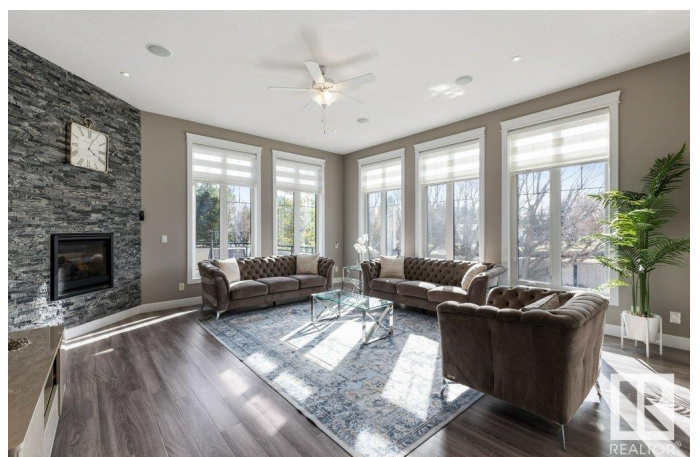
Skyglen Airpark, Rural Sturgeon County, AB

Gorgeous custom-built home offering approx. 3,600 sq ft of finished living space on a private 1.54-acre lot in Sturgeon County—just minutes from St. Albert & Edmonton. Includes a 3,200 sq ft DREAM SHOP with in-floor heat, upper-level offices, & a kitchenette area. Step inside to soaring ceilings & a spacious living room with a stone fireplace, perfect for entertaining. The family room features tile flooring, a wood burning fireplace, & a private balcony. A gourmet kitchen showcases granite counters, stainless steel appliances, tile floors, ample cabinetry, & a large dining area with pantry. Upstairs are 4 generous bedrooms and a full bath. The huge primary suite includes a walk-in closet, 5-piece ensuite, and private balcony. The fully finished basement boasts in-floor heating, large windows, a media room, office space, full bath, bedroom, and storage. Triple attached tandem garage with heated floors completes this dream property. Enjoy country living near urban amenities!

Built in 2015

Essential Information

MLS® #	E4432084
Price	\$1,589,000
Bedrooms	5



Bathrooms	3.50
Full Baths	3
Half Baths	1
Square Footage	2,560
Acres	1.54
Year Built	2015
Type	Rural
Sub-Type	Detached Single Family
Style	Bi-Level
Status	Active

Community Information

Address	9 54231 Rge Road 250
Area	Rural Sturgeon County
Subdivision	Skyglen Airpark
City	Rural Sturgeon County
County	ALBERTA
Province	AB
Postal Code	T8T 0C2

Amenities

Features	Gazebo, Patio, Workshop, See Remarks
----------	--------------------------------------

Interior

Interior Features	ensuite bathroom
Heating	Forced Air-1, In Floor Heat System, Natural Gas
Stories	2
Has Basement	Yes
Basement	Full, Finished

Exterior

Exterior	Wood
Exterior Features	Flat Site, Landscaped, Level Land, See Remarks
Construction	Wood
Foundation	Concrete Perimeter

Additional Information

Date Listed	April 22nd, 2025
Days on Market	56

Zoning

Zone 60

DATA IS DEEMED RELIABLE BUT IS NOT GUARANTEED ACCURATE BY THE REALTORS® ASSOCIATION OF EDMONTON. COPYRIGHT 2025 BY THE REALTORS® ASSOCIATION OF EDMONTON. ALL RIGHTS RESERVED. Trademarks are owned or controlled by the Canadian Real Estate Association (CREA) and identify real estate professionals who are members of CREA (REALTOR®, REALTORS®) and/or the quality of services they provide (MLS®, Multiple Listing Service®)

Listing information last updated on June 17th, 2025 at 3:17pm MDT