

\$539,000 - 256 Lilac Terrace, Sherwood Park

MLS® #E4432261

\$539,000

5 Bedroom, 3.00 Bathroom, 1,280 sqft
Single Family on 0.00 Acres

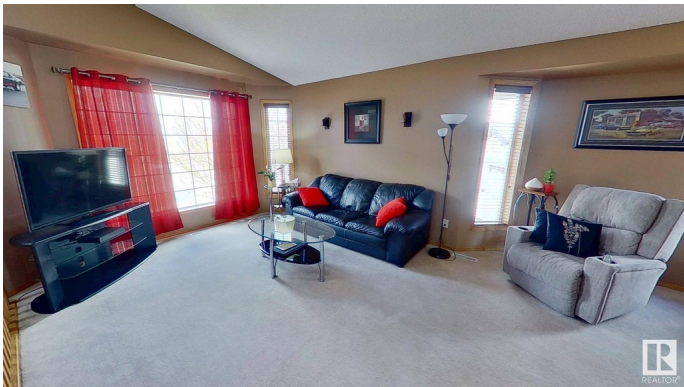
Clarkdale Meadows, Sherwood Park, AB

Charming 5-Bedroom Home in a Great Neighborhood This well-maintained 5-bedroom, 3-bathroom home offers 1,280 sq. ft. of bright, functional living space, plus a large recreation room downstairs with a gas fireplace in a quiet, family-friendly neighborhood. Inside, enjoy a welcoming layout with a cozy living area, practical kitchen, and spacious bedrooms perfect for family, guests, or a home office. The fully fenced backyard is clean and privateâ€”great for kids, pets, or relaxing outdoors. A heated two-car garage adds year-round comfort and convenience. Major updates include a new roof and insulated garage door kit replaced in 2021, offering peace of mind for years to come. Close to parks, schools, shopping, and more, this move-in ready home blends space, comfort, and location. Wonderful Opportunity!

Built in 1997

Essential Information

MLS® #	E4432261
Price	\$539,000
Bedrooms	5
Bathrooms	3.00
Full Baths	3
Square Footage	1,280
Acres	0.00



Year Built	1997
Type	Single Family
Sub-Type	Detached Single Family
Style	Bi-Level
Status	Active

Community Information

Address	256 Lilac Terrace
Area	Sherwood Park
Subdivision	Clarkdale Meadows
City	Sherwood Park
County	ALBERTA
Province	AB
Postal Code	T8H 1Z2

Amenities

Amenities	Detectors Smoke
Parking	2 Outdoor Stalls, 220 Volt Wiring, Double Garage Attached, Heated, Insulated, Parking Pad Cement/Paved

Interior

Interior Features	ensuite bathroom
Appliances	Dishwasher-Built-In, Dryer, Garage Control, Garage Opener, Hood Fan, Humidifier-Power(Furnace), Oven-Microwave, Refrigerator, Storage Shed, Stove-Electric, Vacuum System Attachments, Vacuum Systems, Washer
Heating	Forced Air-1, Natural Gas
Fireplace	Yes
Fireplaces	Direct Vent
Stories	2
Has Basement	Yes
Basement	Full, Finished

Exterior

Exterior	Wood, Vinyl
Exterior Features	Cul-De-Sac, Fenced, Low Maintenance Landscape, Playground Nearby
Roof	Asphalt Shingles
Construction	Wood, Vinyl
Foundation	Concrete Perimeter

Additional Information

Date Listed April 23rd, 2025
Days on Market 9
Zoning Zone 25

DATA IS DEEMED RELIABLE BUT IS NOT GUARANTEED ACCURATE BY THE REALTORS® ASSOCIATION OF EDMONTON. COPYRIGHT 2025 BY THE REALTORS® ASSOCIATION OF EDMONTON. ALL RIGHTS RESERVED.Trademarks are owned or controlled by the Canadian Real Estate Association (CREA) and identify real estate professionals who are members of CREA (REALTOR®, REALTORS®) and/or the quality of services they provide (MLS®, Multiple Listing Service®)
Listing information last updated on May 2nd, 2025 at 9:17pm MDT