

## \$1,399,000 - 53125 Rr 195, Rural Yellowhead

MLS® #E4432303

**\$1,399,000**

4 Bedroom, 3.50 Bathroom, 2,705 sqft

Rural on 151.79 Acres

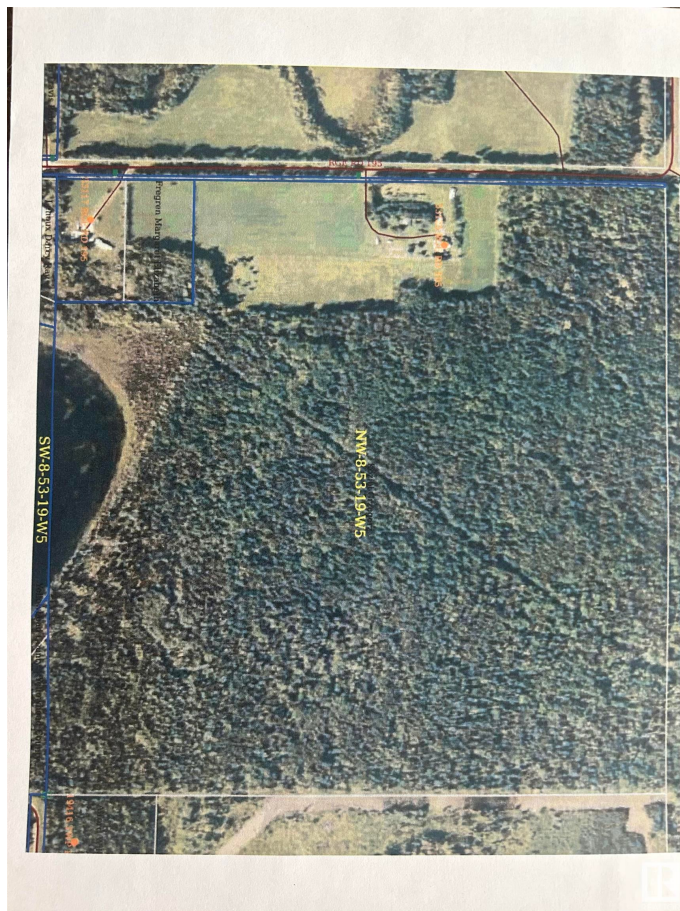
None, Rural Yellowhead, AB

GORGEOUS OVER 2700 SQFT LOG HOUSE and 900 SQFT GUEST HOUSE, DOUBLE GARAGE ON 151.79 ACRES OF LAND ATTACHED TO MILLERS Located 1 1/2 km off the Yellowhead Highway, 1 hr. from famous Jasper National Park & 2.5 Hrs from the City of Edmonton. Adjacent to regularly trout-stocked Miller Lake (23 km West of Edson). Open concept allows for ease of great entertaining as does the massive outdoor covered deck surrounding 2 sides of main level! Upper loft has a private deck. This property has access to hunting, fishing, quading and ski trails

Built in 1995

### Essential Information

MLS® #	E4432303
Price	\$1,399,000
Bedrooms	4
Bathrooms	3.50
Full Baths	3
Half Baths	1
Square Footage	2,705
Acres	151.79
Year Built	1995
Type	Rural
Sub-Type	Detached Single Family
Style	2 Storey



Status Active

Community Information

Address 53125 Rr 195  
Area Rural Yellowhead  
Subdivision None  
City Rural Yellowhead  
County ALBERTA  
Province AB  
Postal Code T7E 3A2

Amenities

Features Deck, Detectors Smoke, Guest Suite, R.V. Storage

Interior

Interior Features ensuite bathroom  
Heating Forced Air-1, Natural Gas  
Stories 3  
Has Basement Yes  
Basement Full, Finished

Exterior

Exterior Log  
Exterior Features Backs Onto Lake, Backs Onto Park/Trees, Lake Access Property, Lake View, Landscaped, Treed Lot  
Construction Log  
Foundation Concrete Perimeter

Additional Information

Date Listed April 23rd, 2025  
Days on Market 10  
Zoning Zone 70

DATA IS DEEMED RELIABLE BUT IS NOT GUARANTEED ACCURATE BY THE REALTORS® ASSOCIATION OF EDMONTON. COPYRIGHT 2025 BY THE REALTORS® ASSOCIATION OF EDMONTON. ALL RIGHTS RESERVED.Trademarks are owned or controlled by the Canadian Real Estate Association (CREA) and identify real estate professionals who are members of CREA (REALTOR®, REALTORS®) and/or the quality of services they provide (MLS®, Multiple Listing Service®)  
Listing information last updated on May 2nd, 2025 at 9:31pm MDT