

## \$785,000 - 8105 Gourlay Place, Edmonton

MLS® #E4432403

**\$785,000**

5 Bedroom, 3.00 Bathroom, 2,443 sqft

Single Family on 0.00 Acres

Granville (Edmonton), Edmonton, AB

Executive built home is located on a quiet street with cul de sac & is located close to parks, schools, walking trails in the prestigious community of Granville. Boasting almost 2400 sqft of luxurious finishings throughout & featuring an abundance of windows allowing for plenty of natural light to flow in. Step inside to the foyer and then onto the open concept main floor living space that features luxury vinyl plank flooring, 2 storey ceilings in the LR, the DR leads you out to the deck & a chef inspired kitchen ft. quartz counters, a massive island, an abundance of cabinet & counter space & a walk through pantry to the mudroom. A 5th bdrm & 4pc bath complete this level. Upstairs, you will find the spacious primary suite that boasts a spa like 5pc ensuite & W/I closet. There is a bonus room, 3 more large bdrms, a laundry rm & 4pc main bthrm that complete this thoughtfully designed high end home. An unfinished bsmnt awaits your personal touch with well designed potential floor print.



Built in 2025

### Essential Information

MLS® # E4432403

Price \$785,000

Bedrooms 5

Bathrooms	3.00
Full Baths	3
Square Footage	2,443
Acres	0.00
Year Built	2025
Type	Single Family
Sub-Type	Detached Single Family
Style	2 Storey
Status	Active

### Community Information

Address	8105 Gourlay Place
Area	Edmonton
Subdivision	Granville (Edmonton)
City	Edmonton
County	ALBERTA
Province	AB
Postal Code	T7T 5E9

### Amenities

Amenities	Ceiling 9 ft., Deck, Natural Gas BBQ Hookup, 9 ft. Basement Ceiling
Parking Spaces	4
Parking	Double Garage Attached

### Interior

Interior Features	ensuite bathroom
Appliances	Dishwasher-Built-In, Dryer, Garage Control, Garage Opener, Hood Fan, Oven-Built-In, Oven-Microwave, Refrigerator, Stove-Countertop Electric, Washer
Heating	Forced Air-1, Natural Gas
Fireplace	Yes
Fireplaces	Mantel
Stories	2
Has Basement	Yes
Basement	Full, Unfinished

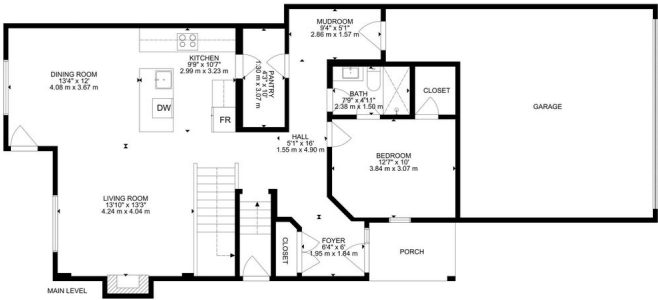
### Exterior

Exterior	Wood, Vinyl
Exterior Features	Fenced, Flat Site, Golf Nearby, Public Transportation, Schools,

	Shopping Nearby
Roof	Asphalt Shingles
Construction	Wood, Vinyl
Foundation	Concrete Perimeter

### Additional Information

Date Listed	April 22nd, 2025
Days on Market	103
Zoning	Zone 58



GROSS INTERNAL AREA  
MAIN LEVEL: 1098 SQ FT, 102 m<sup>2</sup>; UPPER LEVEL: 1345 SQ FT, 125 SQ FT, 125 m<sup>2</sup>  
TOTAL: 2443 SQ FT, 227 m<sup>2</sup>  
SIZE AND DIMENSIONS ARE APPROXIMATE, ACTUAL MAY VARY

DATA IS DEEMED RELIABLE BUT IS NOT GUARANTEED ACCURATE BY THE REALTORS® ASSOCIATION OF EDMONTON. COPYRIGHT 2025 BY THE REALTORS® ASSOCIATION OF EDMONTON. ALL RIGHTS RESERVED.Trademarks are owned or controlled by the Canadian Real Estate Association (CREA) and identify real estate professionals who are members of CREA (REALTOR®, REALTORS®) and/or the quality of services they provide (MLS®, Multiple Listing Service®)

Listing information last updated on August 3rd, 2025 at 6:47am MDT