

# \$424,900 - 1718 Keene Crescent, Edmonton

MLS® #E4432495

**\$424,900**

2 Bedroom, 2.50 Bathroom, 1,469 sqft

Single Family on 0.00 Acres

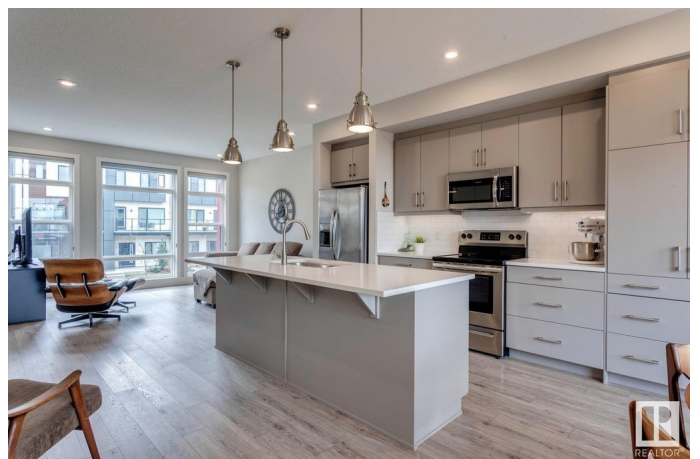
Keswick Area, Edmonton, AB

Absolutely gorgeous townhouse located in One at Keswick! This 1469 sqft fully upgraded END UNIT, w/NO CONDO FEES, shows like new and will certainly impress. The main floor offers a very open floor plan with a modern/comfortable decor. Lavish kitchen w/premium cabinetry, quartz counters, large island, and s.s. appliances. Large living area, great dining space, floor to ceiling windows, and stunning glass feature wall/staircase. Upstairs you will find the large primary suite w/3-pc ensuite, 2nd bedroom, additional 4-pc bath, loft area, and laundry. Outside you will enjoy your patio area w/gasline for BBQ, and fully fenced/landscaped yard. Other features of the home include large front foyer leading to the attached double/tandem garage, central A/C, walkout access to your yard, and more. Located close to parks, trails, ravine system, schools, shopping, and all other amenities Windermere has to offer. Hard to beat the value in this home!

Built in 2018

## Essential Information

MLS® #	E4432495
Price	\$424,900
Bedrooms	2
Bathrooms	2.50



Full Baths	2
Half Baths	1
Square Footage	1,469
Acres	0.00
Year Built	2018
Type	Single Family
Sub-Type	Residential Attached
Style	2 Storey
Status	Active

### Community Information

Address	1718 Keene Crescent
Area	Edmonton
Subdivision	Keswick Area
City	Edmonton
County	ALBERTA
Province	AB
Postal Code	T6W 3W2

### Amenities

Amenities	Air Conditioner, Ceiling 9 ft., Deck, No Animal Home, No Smoking Home, Walkout Basement
Parking	Double Garage Attached, Tandem

### Interior

Interior Features	ensuite bathroom
Appliances	Air Conditioning-Central, Dishwasher-Built-In, Dryer, Garage Opener, Microwave Hood Fan, Refrigerator, Stove-Electric, Washer, Window Coverings
Heating	Forced Air-1, Natural Gas
Stories	3
Has Basement	Yes
Basement	Partial, Finished

### Exterior

Exterior	Wood, Stucco, Hardie Board Siding
Exterior Features	Airport Nearby, Fenced, Golf Nearby, Landscaped, Playground Nearby, Schools, Shopping Nearby
Roof	Asphalt Shingles

Construction	Wood, Stucco, Hardie Board Siding
Foundation	Concrete Perimeter

**School Information**

Elementary	Joey Moss
Middle	Joey Moss
High	Harry Ainlay

**Additional Information**

Date Listed	April 24th, 2025
Days on Market	10
Zoning	Zone 56

DATA IS DEEMED RELIABLE BUT IS NOT GUARANTEED ACCURATE BY THE REALTORS® ASSOCIATION OF EDMONTON. COPYRIGHT 2025 BY THE REALTORS® ASSOCIATION OF EDMONTON. ALL RIGHTS RESERVED.Trademarks are owned or controlled by the Canadian Real Estate Association (CREA) and identify real estate professionals who are members of CREA (REALTOR®, REALTORS®) and/or the quality of services they provide (MLS®, Multiple Listing Service®)

Listing information last updated on May 4th, 2025 at 4:17am MDT