

\$464,900 - 5138 Crabapple Link, Edmonton

MLS® #E4432625

\$464,900

4 Bedroom, 3.50 Bathroom, 1,249 sqft
Single Family on 0.00 Acres

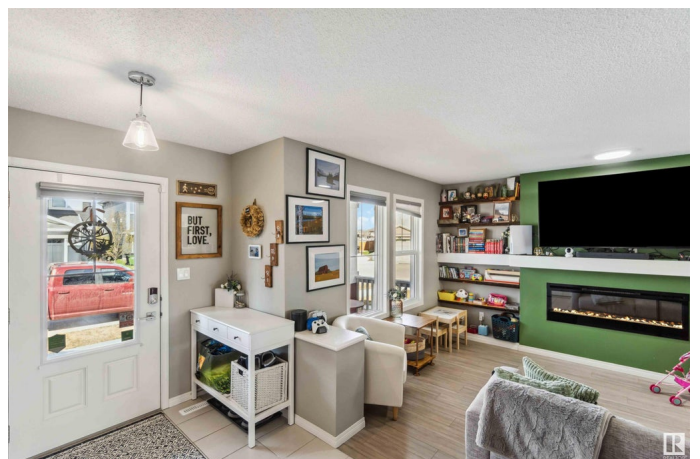
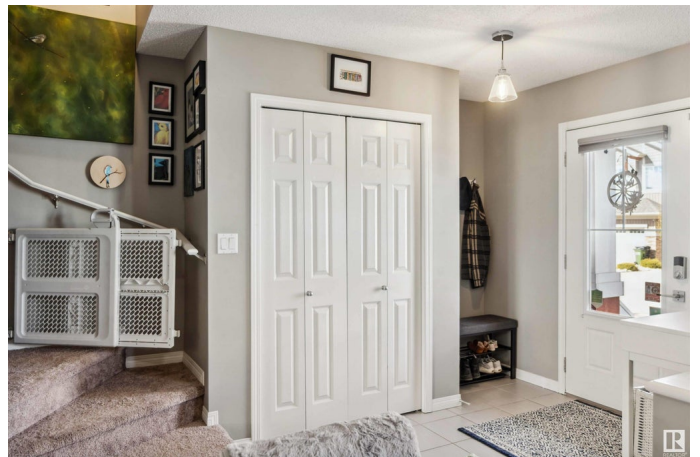
The Orchards At Ellerslie, Edmonton, AB

This charming home in The Orchards at Ellerslie offers nearly 1,300 sq ft of well-designed living space plus a fully finished basement. The open-concept main floor features a bright great room, dining area, and a stylish L-shaped kitchen with quartz countertops. Upstairs, enjoy a spacious primary suite with walk-in closet (built-in organizers) and 3pc ensuite, plus two additional bedrooms and a 4pc bathroom. Outside, enjoy a fenced yard, deck, patio, and double detached garage. This vibrant community includes trails, ponds, and exclusive access to an 8.4-acre residents' park with meeting rooms, a 135-person banquet hall, tennis courts, a regulation-size hockey/skating rink, spray park, kids' skating pond, and toboggan hill. Conveniently located near schools, shopping, and with quick access to Anthony Henday and Ellerslie Road. All this home needs is YOU!

Built in 2016

Essential Information

MLS® #	E4432625
Price	\$464,900
Bedrooms	4
Bathrooms	3.50
Full Baths	3



Half Baths	1
Square Footage	1,249
Acres	0.00
Year Built	2016
Type	Single Family
Sub-Type	Detached Single Family
Style	2 Storey
Status	Active

Community Information

Address	5138 Crabapple Link
Area	Edmonton
Subdivision	The Orchards At Ellerslie
City	Edmonton
County	ALBERTA
Province	AB
Postal Code	T6X 0X4

Amenities

Amenities	Closet Organizers, Deck, Detectors Smoke, Patio
Parking	Double Garage Detached

Interior

Interior Features	ensuite bathroom
Appliances	Dishwasher-Built-In, Dryer, Garage Control, Garage Opener, Hood Fan, Refrigerator, Stove-Electric, Washer, Window Coverings
Heating	Forced Air-1, Natural Gas
Stories	3
Has Basement	Yes
Basement	Full, Finished

Exterior

Exterior	Wood, Vinyl
Exterior Features	Back Lane, Fenced, Flat Site, Landscaped, Park/Reserve, Playground Nearby, Schools, Shopping Nearby, See Remarks
Roof	Asphalt Shingles
Construction	Wood, Vinyl
Foundation	Concrete Perimeter

School Information

Elementary	Jan Reimer School
Middle	Jan Reimer School
High	J. Percy Page School

Additional Information

Date Listed	April 24th, 2025
Days on Market	8
Zoning	Zone 53
HOA Fees	428.57
HOA Fees Freq.	Annually

DATA IS DEEMED RELIABLE BUT IS NOT GUARANTEED ACCURATE BY THE REALTORS® ASSOCIATION OF EDMONTON. COPYRIGHT 2025 BY THE REALTORS® ASSOCIATION OF EDMONTON. ALL RIGHTS RESERVED. Trademarks are owned or controlled by the Canadian Real Estate Association (CREA) and identify real estate professionals who are members of CREA (REALTOR®, REALTORS®) and/or the quality of services they provide (MLS®, Multiple Listing Service®)

Listing information last updated on May 2nd, 2025 at 7:17am MDT