

\$399,000 - 543060 Rr 173, Rural Lamont County

MLS® #E4432647

\$399,000

3 Bedroom, 2.00 Bathroom, 809 sqft

Rural on 29.83 Acres

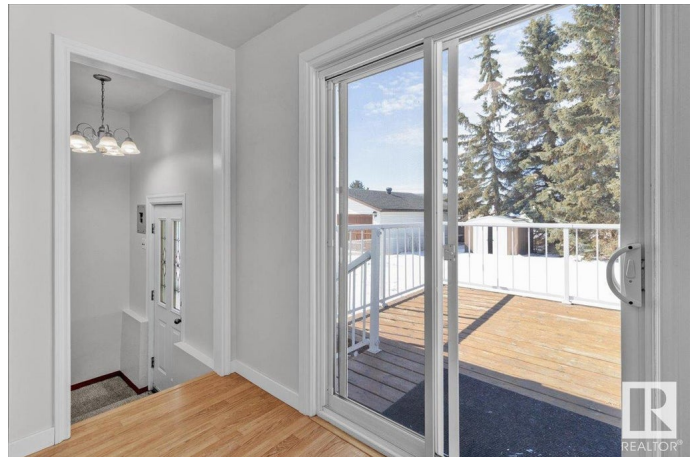
None, Rural Lamont County, AB

Rare find! Just under 30 acres of land in this peaceful setting just west of Mundare! This 3 bedroom raised bungalow is such gem with lots of windows allowing so much natural light! The kitchen features lots of cabinets and counterspace with a patio door leading the the deck, very convenient for bbq 's. The main floor has 2 good size bedrooms and an updated 4 pc bathroom. The livingroom is so bright with the large picture window and another door leading the the front yard. Basment has another bedroom, rec room, 3 pc bath with laundry and additional cabinets for storage. With a large storage room, this home has an abundance of additional storage space. The detached garage is oversized, plenty of space for vehicles and toys. There are 2 grain bins included with the sale, great if you want to start a hobby farm! With a septic tank and pumpout, you dont have to worry about a field or mound system. Escape to this peaceful property and start living your best life!

Built in 1972

Essential Information

MLS® #	E4432647
Price	\$399,000
Bedrooms	3
Bathrooms	2.00



Full Baths	2
Square Footage	809
Acres	29.83
Year Built	1972
Type	Rural
Sub-Type	Detached Single Family
Style	Raised Bungalow
Status	Active

Community Information

Address	543060 Rr 173
Area	Rural Lamont County
Subdivision	None
City	Rural Lamont County
County	ALBERTA
Province	AB
Postal Code	T0B 3H0

Amenities

Features	See Remarks
----------	-------------

Interior

Heating	Forced Air-1, Natural Gas
Stories	2
Has Basement	Yes
Basement	Full, Finished

Exterior

Exterior	Wood
Exterior Features	See Remarks
Construction	Wood
Foundation	Concrete Perimeter

Additional Information

Date Listed	April 23rd, 2025
Days on Market	8
Zoning	Zone 60

DATA IS DEEMED RELIABLE BUT IS NOT GUARANTEED ACCURATE BY THE REALTORS® ASSOCIATION OF EDMONTON. COPYRIGHT 2025 BY THE REALTORS® ASSOCIATION OF EDMONTON. ALL RIGHTS RESERVED. Trademarks are owned or controlled by the Canadian Real Estate Association (CREA) and identify real

estate professionals who are members of CREA (REALTOR®®, REALTORS®®) and/or the quality of services they provide (MLS®®, Multiple Listing Service®®)

Listing information last updated on May 1st, 2025 at 4:47pm MDT