

\$150,000 - 1314 53222 Rge Rd 272, Rural Parkland County

MLS® #E4433713

\$150,000

4 Bedroom, 2.00 Bathroom, 1,509 sqft

Land Lease Community on 0.00 Acres

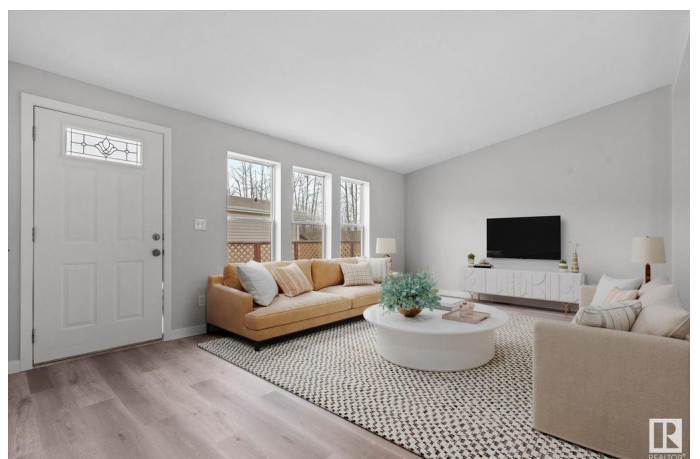
Parkland Village, Rural Parkland County, AB

Welcome to this spacious and freshly renovated 1,509 sq ft mobile home located in the vibrant community of Parkland Village. With 4 bedrooms and 2 bathrooms, this home offers plenty of space for families, first-time buyers, or anyone looking for affordable, move-in-ready living. Inside, you'll find a bright, open layout with brand new flooring, trim, baseboards, and fresh paint throughout. The kitchen features a gas stove and opens to a cozy dining and living space. The primary bedroom is a relaxing retreat, with a walk-in closet, large soaker tub, and a separate stand-up shower in the private ensuite. 3 additional bdrms provide flexibility for kids, guests, or a home office. Parkland Village is a well-established, family-oriented community just minutes from Spruce Grove. Residents enjoy access to a K-6 school, parks/playgrounds, walking trails, a convenience store, community events, and even a fire hall. This home blends comfort, space, and value—all in a community that feels like home. *Virtually Staged*

Built in 2007

Essential Information

MLS® # E4433713



Price	\$150,000
Bedrooms	4
Bathrooms	2.00
Full Baths	2
Square Footage	1,509
Acres	0.00
Year Built	2007
Type	Land Lease Community
Sub-Type	Detached Single Family
Style	Bungalow
Status	Active

Community Information

Address	1314 53222 Rge Rd 272
Area	Rural Parkland County
Subdivision	Parkland Village
City	Rural Parkland County
County	ALBERTA
Province	AB
Postal Code	T7X 4M3

Amenities

Parking	Front Drive Access, No Garage
---------	-------------------------------

Interior

Interior Features	ensuite bathroom
Appliances	Dishwasher-Built-In, Dryer, Hood Fan, Oven-Microwave, Refrigerator, Stove-Gas, Washer
Heating	Forced Air-1, Natural Gas

Exterior

Exterior	Wood
Construction	Wood
Foundation	Block

Additional Information

Date Listed	May 1st, 2025
Days on Market	4
Zoning	Zone 70

DATA IS DEEMED RELIABLE BUT IS NOT GUARANTEED ACCURATE BY THE REALTORS® ASSOCIATION OF EDMONTON. COPYRIGHT 2025 BY THE REALTORS® ASSOCIATION OF EDMONTON. ALL RIGHTS RESERVED. Trademarks are owned or controlled by the Canadian Real Estate Association (CREA) and identify real estate professionals who are members of CREA (REALTOR®, REALTORS®) and/or the quality of services they provide (MLS®, Multiple Listing Service®)

Listing information last updated on May 4th, 2025 at 9:47pm MDT