

## \$350,000 - Ne 16 49 4 W5 Rr 43, Rural Leduc County

MLS® #E4434568

**\$350,000**

0 Bedroom, 0.00 Bathroom,  
Rural on 78.60 Acres

None, Rural Leduc County, AB

Beautiful 78.6 acre parcel of rolling recreational land with approximately 12 acres of open land and the balance being a mixture of poplar, spruce and birch forest. Land is fenced on three sides. The Altalink power line running along the west side of the property provides approx. \$1200 yearly revenue. GST is applicable and not included in the price.

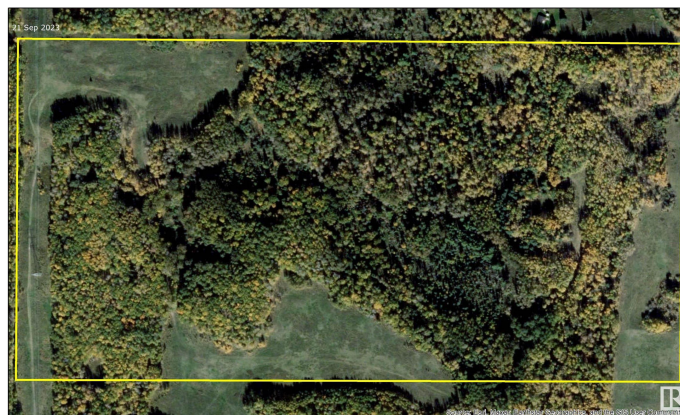
### Essential Information

MLS® #	E4434568
Price	\$350,000
Bathrooms	0.00
Acres	78.60
Type	Rural
Sub-Type	Vacant Lot/Land
Status	Active

### Community Information

Address	Ne 16 49 4 W5 Rr 43
Area	Rural Leduc County
Subdivision	None
City	Rural Leduc County
County	ALBERTA
Province	AB
Postal Code	T0C 0C0

### Exterior



Exterior Features Private Setting, Recreation Use, See Remarks, Partially Fenced

**Additional Information**

Date Listed May 2nd, 2025

Days on Market 7

Zoning Zone 90

DATA IS DEEMED RELIABLE BUT IS NOT GUARANTEED ACCURATE BY THE REALTORS® ASSOCIATION OF EDMONTON. COPYRIGHT 2025 BY THE REALTORS® ASSOCIATION OF EDMONTON. ALL RIGHTS RESERVED.Trademarks are owned or controlled by the Canadian Real Estate Association (CREA) and identify real estate professionals who are members of CREA (REALTOR®, REALTORS®) and/or the quality of services they provide (MLS®, Multiple Listing Service®)

Listing information last updated on May 9th, 2025 at 6:02am MDT