

\$450,000 - 13419 124 Avenue, Edmonton

MLS® #E4434639

\$450,000

1 Bedroom, 1.00 Bathroom, 1,005 sqft
Single Family on 0.00 Acres

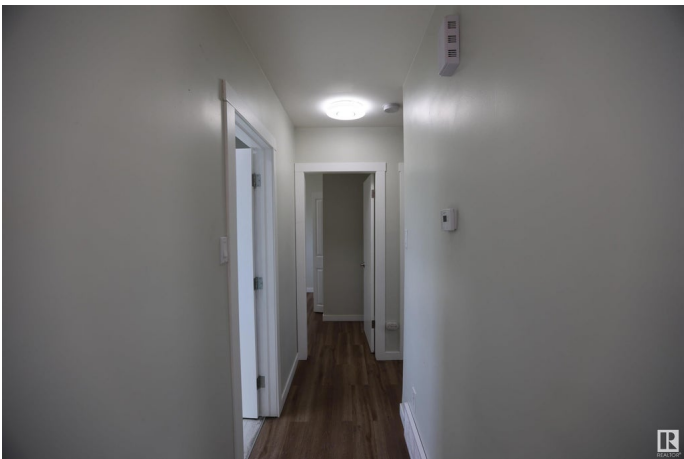
Dovercourt, Edmonton, AB

Situated on a generous 55â€™™ x 129â€™™ corner lot in the heart of Dovercourt, this 1,000 square foot bungalow blends charm and modern updates. Featuring 3 bedrooms above grade and 2 bedrooms below, the bright main floor offers a spacious living area, functional kitchen, and large windows. The basement with separate entrance includes a kitchen, and a bathroom—ideal for guests or family. Recent upgrades include a new furnace, air conditioning, roof, and basement windows. Located near St. Albert Trail and Yellowhead Trail, enjoy easy access to schools, parks, and amenities in this vibrant, tree-lined community. A rare opportunity for families, investors, or builders!

Built in 1954

Essential Information

MLS® #	E4434639
Price	\$450,000
Bedrooms	1
Bathrooms	1.00
Full Baths	1
Square Footage	1,005
Acres	0.00
Year Built	1954
Type	Single Family



Sub-Type	Detached Single Family
Style	Bungalow
Status	Active

Community Information

Address	13419 124 Avenue
Area	Edmonton
Subdivision	Dovercourt
City	Edmonton
County	ALBERTA
Province	AB
Postal Code	T5L 3A4

Amenities

Amenities	Off Street Parking, On Street Parking, Air Conditioner, Hot Water Natural Gas, See Remarks
Parking	Single Garage Detached

Interior

Interior Features	ensuite bathroom
Appliances	Air Conditioning-Central, Dishwasher-Built-In, Dryer, Refrigerator, Stove-Electric, Washer
Heating	Forced Air-1, Natural Gas
Stories	2
Has Basement	Yes
Basement	Full, Finished

Exterior

Exterior	Wood, Vinyl
Exterior Features	Back Lane, Corner Lot, Low Maintenance Landscape, See Remarks, Partially Fenced
Roof	Asphalt Shingles
Construction	Wood, Vinyl
Foundation	Concrete Perimeter

Additional Information

Date Listed	May 5th, 2025
Days on Market	3
Zoning	Zone 04

DATA IS DEEMED RELIABLE BUT IS NOT GUARANTEED ACCURATE BY THE REALTORS® ASSOCIATION OF EDMONTON. COPYRIGHT 2025 BY THE REALTORS® ASSOCIATION OF EDMONTON. ALL RIGHTS RESERVED. Trademarks are owned or controlled by the Canadian Real Estate Association (CREA) and identify real estate professionals who are members of CREA (REALTOR®, REALTORS®) and/or the quality of services they provide (MLS®, Multiple Listing Service®)

Listing information last updated on May 8th, 2025 at 10:47am MDT