

\$539,900 - 19 Hull Wynd, Spruce Grove

MLS® #E4434769

\$539,900

4 Bedroom, 3.00 Bathroom, 1,882 sqft
Single Family on 0.00 Acres

Hilldowns, Spruce Grove, AB

Discover this luxurious duplex by SunnyView Homes in the sought-after Hilldowns community of Spruce Grove. Offering nearly 1,900 sq. ft. of elegant living space, each unit features an attached double garage and a side entrance for future basement suite development. The main floor boasts a bedroom and full bathroom, along with an open-to-above living area for a grand and airy feel. The fully upgraded kitchen is equipped with quartz countertops and a convenient pantry. Upstairs, enjoy a spacious bonus room perfect for family gatherings, two well-sized secondary bedrooms, a shared bathroom, and a laundry room for added convenience. The primary suite is a standout, featuring large windows, a walk-in closet, and a spa-like 5-piece ensuite. With premium finishes and thoughtful design throughout, this duplex is a perfect blend of elegance and functionality. *Pictures are from another home built by same builder for reference purpose only*

Built in 2024

Essential Information

| | |
|-----------|-----------|
| MLS® # | E4434769 |
| Price | \$539,900 |
| Bedrooms | 4 |
| Bathrooms | 3.00 |



| | |
|----------------|---------------|
| Full Baths | 3 |
| Square Footage | 1,882 |
| Acres | 0.00 |
| Year Built | 2024 |
| Type | Single Family |
| Sub-Type | Half Duplex |
| Style | 2 Storey |
| Status | Active |

Community Information

| | |
|-------------|--------------|
| Address | 19 Hull Wynd |
| Area | Spruce Grove |
| Subdivision | Hilldowns |
| City | Spruce Grove |
| County | ALBERTA |
| Province | AB |
| Postal Code | T7X 0X5 |

Amenities

| | |
|-----------|--|
| Amenities | Ceiling 9 ft., Front Porch |
| Parking | Double Garage Attached, Front Drive Access |

Interior

| | |
|-------------------|---------------------------|
| Interior Features | ensuite bathroom |
| Appliances | See Remarks |
| Heating | Forced Air-1, Natural Gas |
| Stories | 2 |
| Has Basement | Yes |
| Basement | Full, Unfinished |

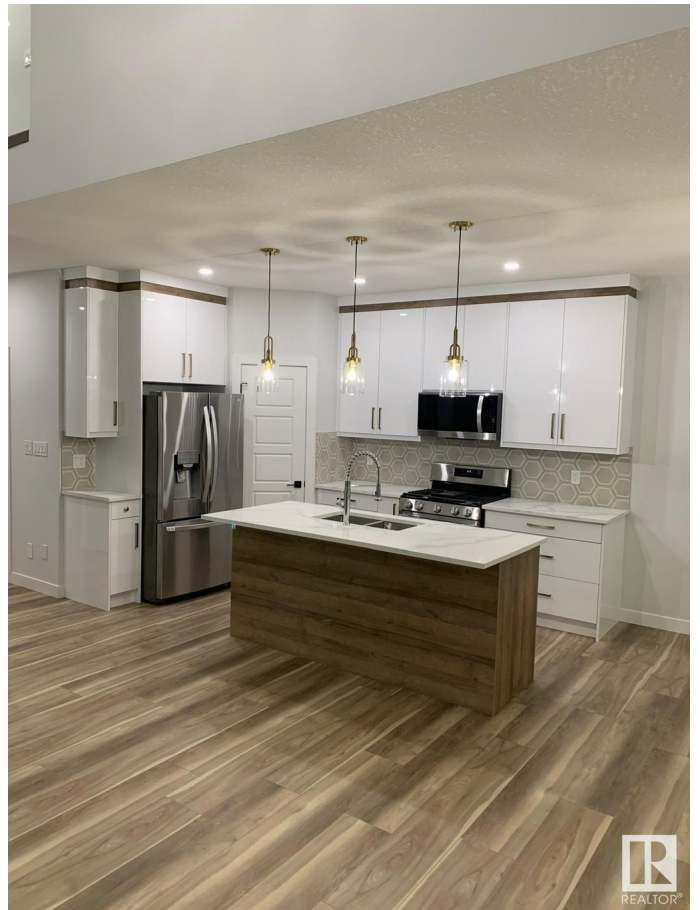
Exterior

| | |
|-------------------|---|
| Exterior | Wood, Stone, Vinyl |
| Exterior Features | Playground Nearby, Schools, Shopping Nearby |
| Roof | Asphalt Shingles |
| Construction | Wood, Stone, Vinyl |
| Foundation | Concrete Perimeter |

Additional Information

| | |
|-------------|---------------|
| Date Listed | May 6th, 2025 |
|-------------|---------------|

Days on Market 58
Zoning Zone 91



DATA IS DEEMED RELIABLE BUT IS NOT GUARANTEED ACCURATE BY THE REALTORS® ASSOCIATION OF EDMONTON. COPYRIGHT 2025 BY THE REALTORS® ASSOCIATION OF EDMONTON. ALL RIGHTS RESERVED. Trademarks are owned or controlled by the Canadian Real Estate Association (CREA) and identify real estate professionals who are members of CREA (REALTOR®, REALTORS®) and/or the quality of services they provide (MLS®, Multiple Listing Service®)

Listing information last updated on July 3rd, 2025 at 2:17am MDT