

\$229,500 - 216 340 Windermere Road, Edmonton

MLS® #E4435041

\$229,500

2 Bedroom, 2.00 Bathroom, 840 sqft
Condo / Townhouse on 0.00 Acres

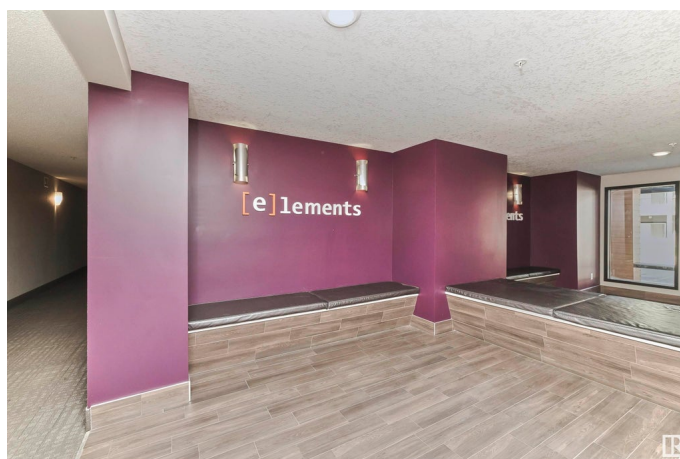
Windermere, Edmonton, AB

This meticulously maintained corner unit features an open-concept layout, two bedrooms, Two Bathrooms, in-suite laundry, two TITLED PARKING STALLS (one underground & one surface stall), and a large storage cage. The two generously sized bedrooms are on opposite sides of the expansive. The living room opens onto a spacious southeast-facing balcony. The kitchen boasts granite countertops and plenty of cupboard space. The master bedroom offers a HUGE walk-through closet leading to a private 4-piece ensuite, while the second bedroom enjoys its own dedicated 3-piece bathroom. This fantastic location is located within walking distance of all sorts of shopping, restaurants, cafes, movie theatres, public transit & other amenities. Easy access to Anthony Henday & airport.

Built in 2014

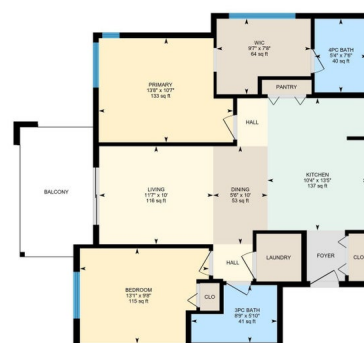
Essential Information

MLS® #	E4435041
Price	\$229,500
Bedrooms	2
Bathrooms	2.00
Full Baths	2
Square Footage	840
Acres	0.00



216-340 Windermere Rd NW, Edmonton, AB

Main Floor Interior Area 840.45 sq ft



0 3 6 ft

PREPARED: 20250507

While regions are excluded from total floor area in IGSIDE floor plans, all room dimensions and floor areas must be considered approximate and are subject to independent verification.

Year Built	2014
Type	Condo / Townhouse
Sub-Type	Lowrise Apartment
Style	Single Level Apartment
Status	Active

Community Information

Address	216 340 Windermere Road
Area	Edmonton
Subdivision	Windermere
City	Edmonton
County	ALBERTA
Province	AB
Postal Code	T6W 2P2

Amenities

Amenities	Detectors Smoke, Intercom, No Smoking Home, Parking-Extra, Parking-Visitor, Secured Parking, Security Door
Parking Spaces	2
Parking	Stall, Underground

Interior

Interior Features	ensuite bathroom
Appliances	Dishwasher-Built-In, Microwave Hood Fan, Refrigerator, Stacked Washer/Dryer, Stove-Electric
Heating	Baseboard, Natural Gas
# of Stories	4
Stories	1
Has Basement	Yes
Basement	None, No Basement

Exterior

Exterior	Wood, Stucco, Vinyl
Exterior Features	Airport Nearby, Golf Nearby, Picnic Area, Playground Nearby, Public Transportation, Schools, Shopping Nearby
Roof	Asphalt Shingles
Construction	Wood, Stucco, Vinyl
Foundation	Concrete Perimeter

Additional Information

Date Listed	May 7th, 2025
Days on Market	55
Zoning	Zone 56
Condo Fee	\$509

DATA IS DEEMED RELIABLE BUT IS NOT GUARANTEED ACCURATE BY THE REALTORS® ASSOCIATION OF EDMONTON. COPYRIGHT 2025 BY THE REALTORS® ASSOCIATION OF EDMONTON. ALL RIGHTS RESERVED. Trademarks are owned or controlled by the Canadian Real Estate Association (CREA) and identify real estate professionals who are members of CREA (REALTOR®, REALTORS®) and/or the quality of services they provide (MLS®, Multiple Listing Service®)

Listing information last updated on July 1st, 2025 at 8:32am MDT