

\$898,950 - 820 177 Street, Edmonton

MLS® #E4435210

\$898,950

7 Bedroom, 4.50 Bathroom, 3,144 sqft

Single Family on 0.00 Acres

Windermere, Edmonton, AB

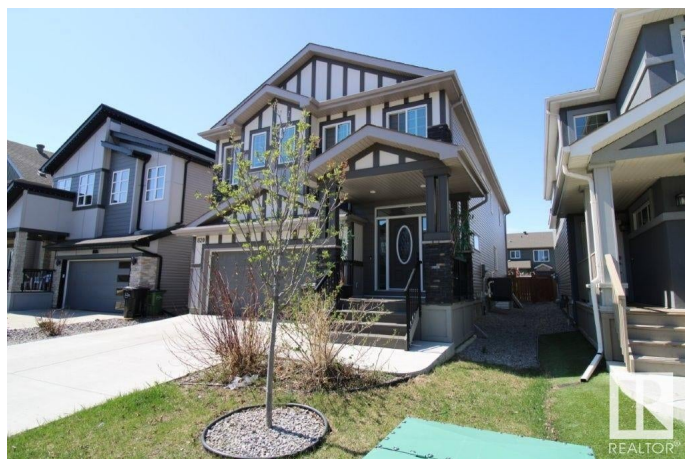
Visit the Listing Brokerage (and/or listing REALTOR®) website to obtain additional information. Nestled in the sought-after Langdale community, this exquisite home offers approximately 4,000 sq. ft. of thoughtfully designed living space, including a fully finished basement. The chef's kitchen boasts premium stainless-steel appliances, an oversized island, and a walk-through pantry. The open-concept main floor is illuminated by natural light and features soaring 9-foot ceilings, vinyl tile flooring, a cozy fireplace, and a spacious bedroom or office with a 3-piece bath. Upstairs, a generous bonus room complements the luxurious primary suite with a 5-piece ensuite and walk-in closet. Three additional bedrooms, a full bath with double sinks, a half bath, and an upstairs laundry room ensure functionality. The beautifully finished lower level includes a second kitchen, laundry, a full bath, and two bedrooms with a private entrance—ideal for guests or extended family. Additional highlights include insulated garage.

Built in 2019

Essential Information

MLS® # E4435210

Price \$898,950



Bedrooms	7
Bathrooms	4.50
Full Baths	4
Half Baths	1
Square Footage	3,144
Acres	0.00
Year Built	2019
Type	Single Family
Sub-Type	Detached Single Family
Style	2 Storey
Status	Active

Community Information

Address	820 177 Street
Area	Edmonton
Subdivision	Windermere
City	Edmonton
County	ALBERTA
Province	AB
Postal Code	T6W 2X2

Amenities

Amenities	Air Conditioner, Ceiling 9 ft., Detectors Smoke, No Animal Home, No Smoking Home, HRV System
Parking	Double Garage Attached

Interior

Interior Features	ensuite bathroom
Appliances	Air Conditioning-Central, See Remarks
Heating	Forced Air-1, Natural Gas
Fireplace	Yes
Fireplaces	Insert
Stories	2
Has Basement	Yes
Basement	Full, Finished

Exterior

Exterior	Wood, Vinyl
Exterior Features	Fenced, Landscaped, Playground Nearby, Schools, Shopping Nearby

Roof	Asphalt Shingles
Construction	Wood, Vinyl
Foundation	Concrete Perimeter

Additional Information

Date Listed	May 8th, 2025
Days on Market	102
Zoning	Zone 56

DATA IS DEEMED RELIABLE BUT IS NOT GUARANTEED ACCURATE BY THE REALTORS® ASSOCIATION OF EDMONTON. COPYRIGHT 2025 BY THE REALTORS® ASSOCIATION OF EDMONTON. ALL RIGHTS RESERVED.Trademarks are owned or controlled by the Canadian Real Estate Association (CREA) and identify real estate professionals who are members of CREA (REALTOR®, REALTORS®) and/or the quality of services they provide (MLS®, Multiple Listing Service®)

Listing information last updated on August 18th, 2025 at 4:47pm MDT