

# \$220,000 - 50 Avenue, Sherwood Park

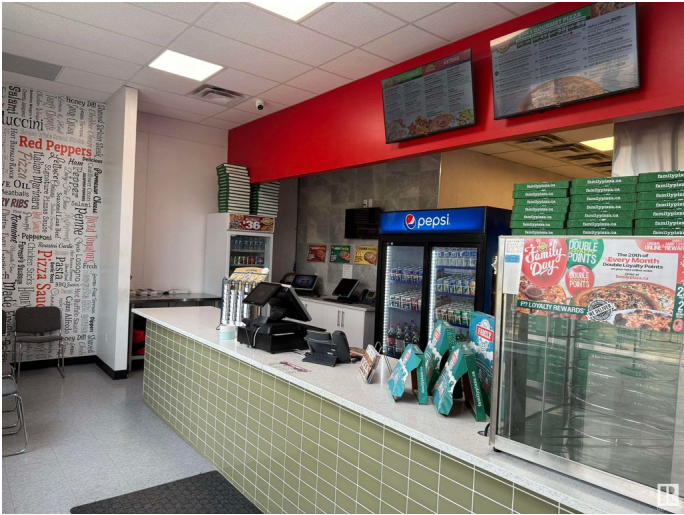
MLS® #E4436390

**\$220,000**

0 Bedroom, 0.00 Bathroom,  
Business on 0.00 Acres

Maplegrove, Sherwood Park, AB

An exceptional opportunity to own a fully operational and turnkey pizza business located in the heart of Sherwood Park! Situated in a high-traffic, prime location, this well-established pizzeria enjoys excellent visibility and consistent foot traffic, making it an ideal investment for both experienced restaurateurs and first-time business owners. The kitchen is fully equipped and up to modern standards, allowing for efficient workflow and high-quality food preparation. Donâ€™t miss your chance to own a thriving pizza business.



## Essential Information

MLS® #	E4436390
Price	\$220,000
Bathrooms	0.00
Acres	0.00
Type	Business
Status	Active

## Community Information

Address	50 Avenue
Area	Sherwood Park
Subdivision	Maplegrove
City	Sherwood Park
County	ALBERTA
Province	AB

Postal Code            T8A 2G2

**Additional Information**

Date Listed            May 14th, 2025

Days on Market       52

Zoning                Zone 25

DATA IS DEEMED RELIABLE BUT IS NOT GUARANTEED ACCURATE BY THE REALTORS® ASSOCIATION OF EDMONTON. COPYRIGHT 2025 BY THE REALTORS® ASSOCIATION OF EDMONTON. ALL RIGHTS RESERVED.Trademarks are owned or controlled by the Canadian Real Estate Association (CREA) and identify real estate professionals who are members of CREA (REALTOR®, REALTORS®) and/or the quality of services they provide (MLS®, Multiple Listing Service®)

Listing information last updated on July 5th, 2025 at 7:32pm MDT