

\$399,000 - 41226 Twp Rd 630, Rural Bonnyville M.D.

MLS® #E4437234

\$399,000

0 Bedroom, 0.00 Bathroom,
Rural on 143.17 Acres

None, Rural Bonnyville M.D., AB

If you are looking for an idyllic quarter section of land close to Cold Lake..right off Township Road 630 and Range Road 413, then this is the land for you! with 143 acres - the majority wide open - it's ideal farmland if you keep it raw, or with its proximity to Cold Lake, could be the ideal place to build your dream home. The opportunities are endless!

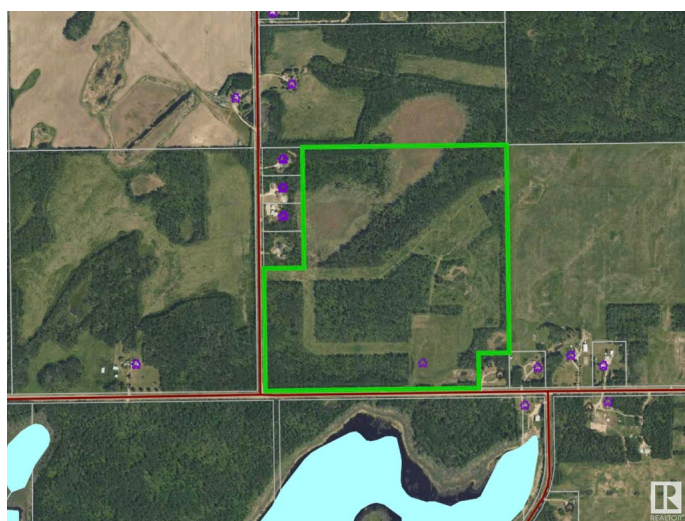
Essential Information

MLS® #	E4437234
Price	\$399,000
Bathrooms	0.00
Acres	143.17
Type	Rural
Sub-Type	Vacant Lot/Land
Status	Active

Community Information

Address	41226 Twp Rd 630
Area	Rural Bonnyville M.D.
Subdivision	None
City	Rural Bonnyville M.D.
County	ALBERTA
Province	AB
Postal Code	T9M 1P1

Exterior



Exterior Features Level Land, Treed Lot

Additional Information

Date Listed May 18th, 2025

Days on Market 76

Zoning Zone 60

DATA IS DEEMED RELIABLE BUT IS NOT GUARANTEED ACCURATE BY THE REALTORS® ASSOCIATION OF EDMONTON. COPYRIGHT 2025 BY THE REALTORS® ASSOCIATION OF EDMONTON. ALL RIGHTS RESERVED.Trademarks are owned or controlled by the Canadian Real Estate Association (CREA) and identify real estate professionals who are members of CREA (REALTOR®, REALTORS®) and/or the quality of services they provide (MLS®, Multiple Listing Service®)

Listing information last updated on August 2nd, 2025 at 7:02am MDT