

\$99,000 - N/A, Edmonton

MLS® #E4437917

\$99,000

2 Bedroom, 1.00 Bathroom, 771 sqft

Condo / Townhouse on 0.00 Acres

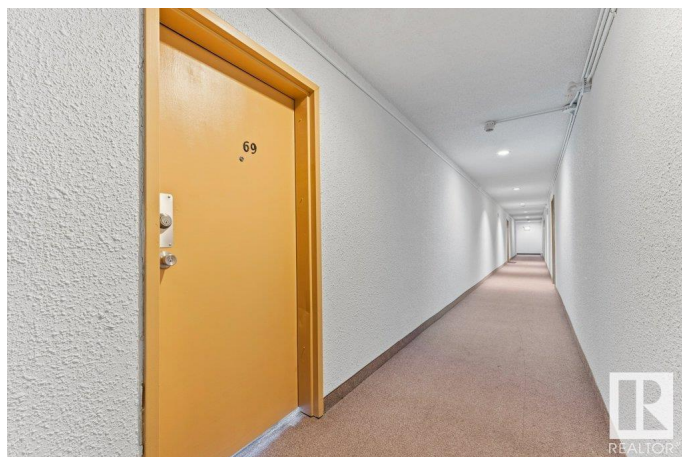
Sweet Grass, Edmonton, AB

Updated spacious 2 bedroom TOP FLOOR unit is in like new condition for first time buyer or investment opportunity. With nearly 800 sqft. of living space, this unit offers spacious living room with patio doors to a good sized balcony & west facing views of the green space! Huge master bedroom, insuite storage room, nice bright kitchen with dining area and loads of closet space. Includes white appliances black light fixtures, Decora switches and newer interior doors. Quiet location with nice floor plan. Exceptional building amenities feature indoor heated pool, tennis/basketball courts, fitness room, daycare and on site management. Located in the desirable community of Sweet Grass just minutes away from Century Park LRT station. Shopping, schools, park, playground and recreational facilities are all nearby. Condo fee includes heat, power, water and more!

Built in 1977

Essential Information

MLS® #	E4437917
Price	\$99,000
Bedrooms	2
Bathrooms	1.00
Full Baths	1
Square Footage	771



Acres	0.00
Year Built	1977
Type	Condo / Townhouse
Sub-Type	Lowrise Apartment
Style	Single Level Apartment
Status	Active

Community Information

Address	N/A
Area	Edmonton
Subdivision	Sweet Grass
City	Edmonton
County	ALBERTA
Province	AB
Postal Code	T6J 3V5

Amenities

Amenities	Exercise Room, Parking-Plug-Ins, Parking-Visitor, Pool-Indoor, Recreation Room/Centre, Vinyl Windows
Parking Spaces	1
Parking	Stall
Has Pool	Yes

Interior

Appliances	Hood Fan, Refrigerator, Stove-Electric
Heating	Hot Water, Natural Gas
# of Stories	4
Stories	1
Has Basement	Yes
Basement	None, No Basement

Exterior

Exterior	Wood, Vinyl
Exterior Features	Public Swimming Pool, Recreation Use, Schools, Shopping Nearby, See Remarks
Roof	Tar & Gravel
Construction	Wood, Vinyl
Foundation	Concrete Perimeter

School Information

Elementary	Sweet Grass K-6
Middle	Vernon Barford 7-9
High	Harry Ainlay 10-12

Additional Information

Date Listed	May 21st, 2025
Days on Market	27
Zoning	Zone 16
Condo Fee	\$678

DATA IS DEEMED RELIABLE BUT IS NOT GUARANTEED ACCURATE BY THE REALTORS® ASSOCIATION OF EDMONTON. COPYRIGHT 2025 BY THE REALTORS® ASSOCIATION OF EDMONTON. ALL RIGHTS RESERVED. Trademarks are owned or controlled by the Canadian Real Estate Association (CREA) and identify real estate professionals who are members of CREA (REALTOR®, REALTORS®) and/or the quality of services they provide (MLS®, Multiple Listing Service®)

Listing information last updated on June 17th, 2025 at 7:17am MDT