

\$499,900 - 2245 Alces Drive, Edmonton

MLS® #E4438230

\$499,900

3 Bedroom, 2.50 Bathroom, 1,783 sqft
Single Family on 0.00 Acres

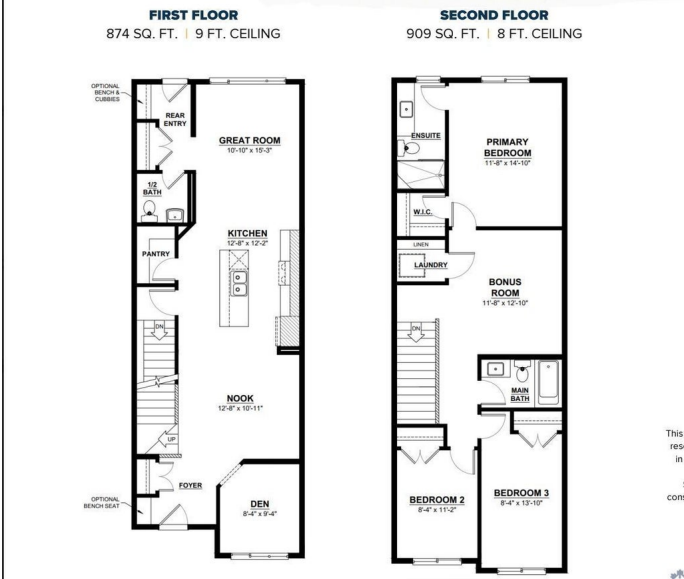
Alces, Edmonton, AB

Welcome to the Maxima model by Daytona Homes. Open the front door to a spacious entry way and a beautiful open floor plan. Offering you 1,783 sq. ft. with a beautiful kitchen island. It features in sleek 18' wide layout, generous rear entry, all while giving you a den, ideal for a home office or playroom, and a rear living room layout which is perfect for those Summer nights. The bright windows will have you seeing the light all year long. Upstairs is complete with a generous size master bedroom with ensuite, 2 more bedrooms, stacked laundry area and a bonus room for that little extra needed space. This is a beautiful place to call home.

Built in 2025

Essential Information

MLS® #	E4438230
Price	\$499,900
Bedrooms	3
Bathrooms	2.50
Full Baths	2
Half Baths	1
Square Footage	1,783
Acres	0.00
Year Built	2025
Type	Single Family



Sub-Type	Detached Single Family
Style	2 Storey
Status	Active

Community Information

Address	2245 Alces Drive
Area	Edmonton
Subdivision	Alces
City	Edmonton
County	ALBERTA
Province	AB
Postal Code	T0T 0T0

Amenities

Amenities	See Remarks
Parking	Parking Pad Cement/Paved

Interior

Interior Features	ensuite bathroom
Appliances	Microwave Hood Fan
Heating	Forced Air-1, Natural Gas
Stories	2
Has Basement	Yes
Basement	Full, Unfinished

Exterior

Exterior	Wood, Vinyl
Exterior Features	See Remarks
Roof	Asphalt Shingles
Construction	Wood, Vinyl
Foundation	Concrete Perimeter

Additional Information

Date Listed	May 23rd, 2025
Days on Market	71
Zoning	Zone 53

DATA IS DEEMED RELIABLE BUT IS NOT GUARANTEED ACCURATE BY THE REALTORS® ASSOCIATION OF EDMONTON. COPYRIGHT 2025 BY THE REALTORS® ASSOCIATION OF EDMONTON. ALL RIGHTS RESERVED. Trademarks are owned or controlled by the Canadian Real Estate Association (CREA) and identify real estate professionals who are members of CREA (REALTOR®, REALTORS®) and/or the quality of services they

provide (MLS® , Multiple Listing Service®)
Listing information last updated on August 2nd, 2025 at 2:32pm MDT