

\$1,500,000 - 19 27019 Twp Rd 514, Rural Parkland County

MLS® #E4439598

\$1,500,000

5 Bedroom, 3.00 Bathroom, 2,294 sqft

Rural on 4.03 Acres

Pine Wood (Parkland), Rural Parkland County, AB

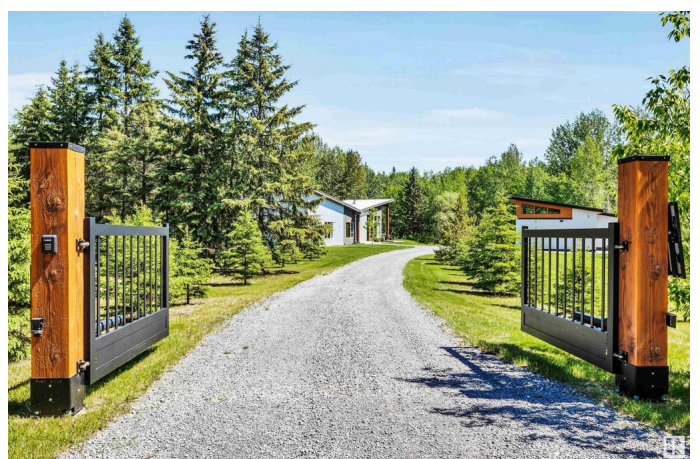
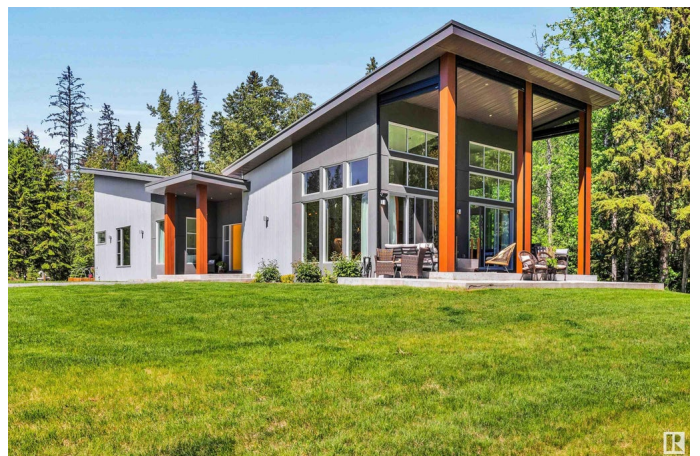
Ideal for relocation buyers, hybrid professionals & those seeking a modern home that offers space w/out sacrificing proximity. This is a rare opportunity to own a home that delivers intentional design, exceptional privacy & future-ready infrastructure! Located less than 15 mins from Edmonton, this custom-built home sits on 4.03 private acres. Designed with modern European craftsmanship, it combines the space & privacy of an acreage w/ seamless access to the city. Inside, 16ft vaulted ceilings, polished concrete floors & a floor-to-ceiling dbl-sided wood-burning F/P anchor the main living area. The kitchen features flat-cut walnut cabinetry, JennAir appliances & quartz surfaces. Recently, the property has been enhanced w/ a heated shop (solar-ready), EV plugs, solar-powered gate, full patio screening, spa-grade hot tub off primary suite, full lawn restoration & walking trail through the trees. A landscaped firepit, raised beds & seasonal vegetables complete the outdoor setting. Fully paved access.

Built in 2017

Essential Information

MLS® #

E4439598



Price	\$1,500,000
Bedrooms	5
Bathrooms	3.00
Full Baths	3
Square Footage	2,294
Acres	4.03
Year Built	2017
Type	Rural
Sub-Type	Detached Single Family
Style	Bungalow
Status	Active

Community Information

Address	19 27019 Twp Rd 514
Area	Rural Parkland County
Subdivision	Pine Wood (Parkland)
City	Rural Parkland County
County	ALBERTA
Province	AB
Postal Code	T7Y 1G6

Amenities

Features	Air Conditioner, Ceiling 9 ft., Deck, Fire Pit, Front Porch, No Smoking Home, Vaulted Ceiling, See Remarks, Vacuum System-Roughed-In, Natural Gas BBQ Hookup
----------	--

Interior

Interior Features	ensuite bathroom
Heating	Forced Air-1, Natural Gas
Stories	2
Has Basement	Yes
Basement	Full, Finished

Exterior

Exterior	Wood
Exterior Features	Airport Nearby, Fruit Trees/Shrubs, Landscaped, Private Setting, Schools, Stream/Pond, Treed Lot, Vegetable Garden, See Remarks
Construction	Wood
Foundation	Concrete Perimeter

Additional Information

Date Listed May 30th, 2025
Days on Market 64
Zoning Zone 90

DATA IS DEEMED RELIABLE BUT IS NOT GUARANTEED ACCURATE BY THE REALTORS® ASSOCIATION OF EDMONTON. COPYRIGHT 2025 BY THE REALTORS® ASSOCIATION OF EDMONTON. ALL RIGHTS RESERVED.Trademarks are owned or controlled by the Canadian Real Estate Association (CREA) and identify real estate professionals who are members of CREA (REALTOR®, REALTORS®) and/or the quality of services they provide (MLS®, Multiple Listing Service®)
Listing information last updated on August 2nd, 2025 at 11:17am MDT