

\$424,000 - 202 53320 Rge Road 30, Rural Parkland County

MLS® #E4439621

\$424,000

3 Bedroom, 1.00 Bathroom, 1,062 sqft
Rural on 3.00 Acres

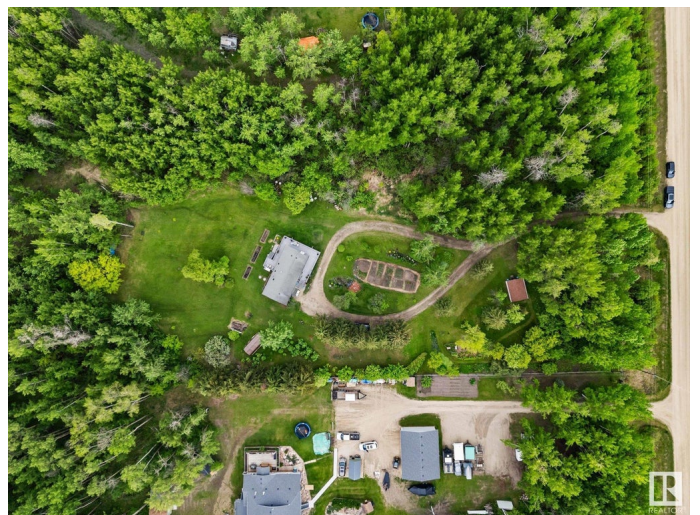
Meso West I, Rural Parkland County, AB

Looking for the quiet life? This acreage is for you! Beautifully landscaped on 3 acres. Totally private! Lovely home with a full basement (unfinished) and room for storage. 3 beds, 1 bath with space to expand. Beautiful gardens, trees and nature all at you doorstep. Back deck faces south. A perfect place to have your morning coffee and watch the deer. Out front has a beautiful garden, ready for all your tomatoes & veggies. Pull around drive for parking. Bonus is a Bunkie! 2 beds and a sitting room. Close to the power line, so easy to hook up for the kids on the weekend. Upgrades include: drilled well in 2015, New furnace, HWT, pressure tank & water filtration system in 2020. 2 sump pumps. All new windows in 2021. 2023 had new vapor barrier system in basement & re-graded. Plenty of room to build a garage. Close to Stony Plain & Spruce. Your Oasis awaits.

Built in 1976

Essential Information

MLS® #	E4439621
Price	\$424,000
Bedrooms	3
Bathrooms	1.00



Full Baths	1
Square Footage	1,062
Acres	3.00
Year Built	1976
Type	Rural
Sub-Type	Detached Single Family
Style	Bungalow
Status	Active

Community Information

Address	202 53320 Rge Road 30
Area	Rural Parkland County
Subdivision	Meso West I
City	Rural Parkland County
County	ALBERTA
Province	AB
Postal Code	T7Y 0E2

Amenities

Features	Deck, No Animal Home, No Smoking Home
----------	---------------------------------------

Interior

Heating	Forced Air-1, Natural Gas
Fireplace	Yes
Stories	1
Has Basement	Yes
Basement	Full, Unfinished

Exterior

Exterior Features	Backs Onto Park/Trees, Fruit Trees/Shrubs, Golf Nearby, Landscaped
Foundation	Concrete Perimeter

Additional Information

Date Listed	May 30th, 2025
Days on Market	64
Zoning	Zone 70

DATA IS DEEMED RELIABLE BUT IS NOT GUARANTEED ACCURATE BY THE REALTORS® ASSOCIATION OF EDMONTON. COPYRIGHT 2025 BY THE REALTORS® ASSOCIATION OF EDMONTON. ALL RIGHTS RESERVED. Trademarks are owned or controlled by the Canadian Real Estate Association (CREA) and identify real estate professionals who are members of CREA (REALTOR®, REALTORS®) and/or the quality of services they

provide (MLS®®, Multiple Listing Service®®)
Listing information last updated on August 2nd, 2025 at 7:47am MDT