

\$569,900 - 19, 57104 Hwy 38, Waterdale Park, Rural Sturgeon County

MLS® #E4439722

\$569,900

4 Bedroom, 2.00 Bathroom, 1,262 sqft

Rural on 3.04 Acres

Waterdale Park, Rural Sturgeon County, AB

ENJOY THE PEACEFUL COUNTRY LIFE!

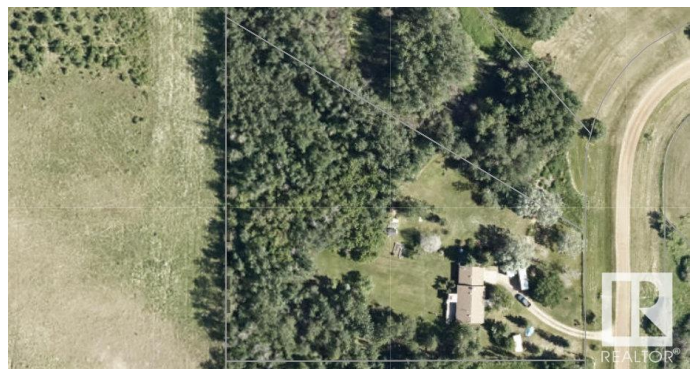
Welcome to #19 Ivan Road, here in Waterdale Park just outside Redwater! This well-maintained home is fenced & gated with a large back deck, overlooking the beautiful landscape. Inside, the living room has a beautiful fireplace to cozy up around. Open concept dining rm /kitchen with granite countertops, and patio doors leading out to deck, 2 bdrms and a 4pc bathrm down the hall. Basement has a separate entrance w/a kitchenette (perfect for a guest to stay downstairs comfortably), large 2nd living room with gas fireplace, 2 more bdrms, plus full bathroom w/ soaker tub. Attachedd dbl heated garage, plus tarp-shed for vehicle/toy storage. Tons of yard space to store RV & more. This acreage is beautiful, quiet & private, and often you can see peaceful wildlife passing through. Nearby Redwater offers: jobs, k-12 school, arena, pool, golf, shopping, restaurants, hospital & more! on the school bus route! Peaceful, beautiful property! **DON'T MISS OUT!**

Built in 1992

Essential Information

MLS® #

E4439722



Price	\$569,900
Bedrooms	4
Bathrooms	2.00
Full Baths	2
Square Footage	1,262
Acres	3.04
Year Built	1992
Type	Rural
Sub-Type	Detached Single Family
Style	Bungalow
Status	Active

Community Information

Address	19, 57104 Hwy 38, Waterdale Park
Area	Rural Sturgeon County
Subdivision	Waterdale Park
City	Rural Sturgeon County
County	ALBERTA
Province	AB
Postal Code	T0A 2W0

Amenities

Features	Deck, Fire Pit, Gazebo, Greenhouse, Parking-Extra, Parking-Plug-Ins, R.V. Storage, Vinyl Windows
----------	--

Interior

Heating	Forced Air-1, Natural Gas
Fireplace	Yes
Stories	2
Has Basement	Yes
Basement	Full, Finished

Exterior

Exterior	Wood
Exterior Features	Backs Onto Park/Trees, Environmental Reserve, Fenced, Golf Nearby, Landscaped, Private Setting, Schools, Shopping Nearby, Treed Lot, Vegetable Garden
Construction	Wood
Foundation	Concrete Perimeter

Additional Information

Date Listed May 31st, 2025
Days on Market 63
Zoning Zone 60

DATA IS DEEMED RELIABLE BUT IS NOT GUARANTEED ACCURATE BY THE REALTORS® ASSOCIATION OF EDMONTON. COPYRIGHT 2025 BY THE REALTORS® ASSOCIATION OF EDMONTON. ALL RIGHTS RESERVED.Trademarks are owned or controlled by the Canadian Real Estate Association (CREA) and identify real estate professionals who are members of CREA (REALTOR®, REALTORS®) and/or the quality of services they provide (MLS®, Multiple Listing Service®)
Listing information last updated on August 2nd, 2025 at 7:47am MDT