

## \$597,750 - 5024 39st, Sylvan Lake

MLS® #E4441126

**\$597,750**

3 Bedroom, 2.00 Bathroom, 813 sqft

Single Family on 0.00 Acres

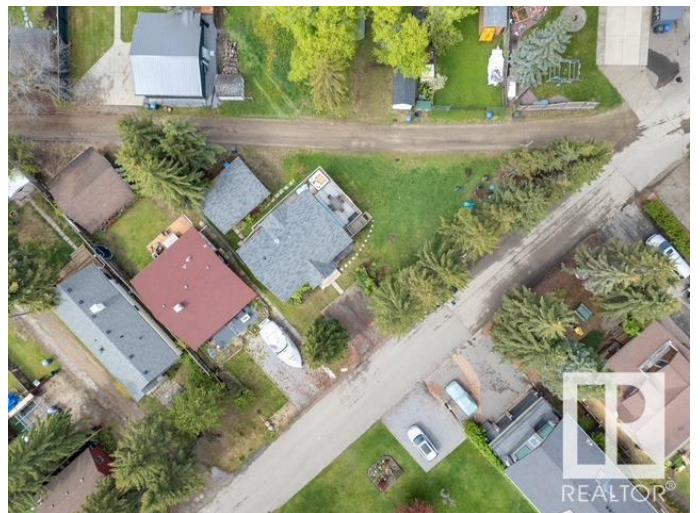
Central (Sylvan Lake), Sylvan Lake, AB

WELCOME TO SYLVAN LAKE This exquisite corner lot home offers eye-sight scenes views to the beautiful lake offering top level finishings. Make this your personal getaway dream home or a source of income, just steps away from the beautiful Sylvan Lake this home comes furnished so you don't have to worry about a thing. main level offers you a bright kitchen and living room with massive windows for sunlight and spectacular views with the master bedroom and attached bathroom along with laundry on same level. Coming downstairs shows you 2 bedrooms with a large living room, perhaps your game room? or say a family fun night ! OH wait ! lets not forget about the massive yard you have for all your fun activities along with a single detached garage for your bat mobile. This home doesn't just offer you a view, it offers you a lifestyle.

Built in 1996

### Essential Information

MLS® #	E4441126
Price	\$597,750
Bedrooms	3
Bathrooms	2.00
Full Baths	2
Square Footage	813
Acres	0.00



Year Built	1996
Type	Single Family
Sub-Type	Detached Single Family
Style	Bi-Level
Status	Active

### **Community Information**

Address	5024 39st
Area	Sylvan Lake
Subdivision	Central (Sylvan Lake)
City	Sylvan Lake
County	ALBERTA
Province	AB
Postal Code	T4S 1B8

### **Amenities**

Amenities	Air Conditioner, Deck, Fire Pit
Parking	Front Drive Access, Single Garage Detached

### **Interior**

Interior Features	ensuite bathroom
Appliances	Air Conditioning-Central, Dishwasher-Built-In, Dryer, Furniture Included, Garage Opener, Household Goods Included, Microwave Hood Fan, Refrigerator, Stove-Electric, Washer, Window Coverings, TV Wall Mount, Curtains and Blinds
Heating	Forced Air-1, Natural Gas
Stories	2
Has Basement	Yes
Basement	Full, Finished

### **Exterior**

Exterior	Concrete, Vinyl
Exterior Features	Back Lane, Beach Access, Boating, Commercial, Corner Lot, Golf Nearby, Landscaped, Low Maintenance Landscape, Picnic Area, Playground Nearby, Schools, Shopping Nearby
Roof	Asphalt Shingles
Construction	Concrete, Vinyl
Foundation	Slab

### **Additional Information**

Date Listed June 7th, 2025

Days on Market 56

Zoning Zone RUR6

DATA IS DEEMED RELIABLE BUT IS NOT GUARANTEED ACCURATE BY THE REALTORS® ASSOCIATION OF EDMONTON. COPYRIGHT 2025 BY THE REALTORS® ASSOCIATION OF EDMONTON. ALL RIGHTS RESERVED. Trademarks are owned or controlled by the Canadian Real Estate Association (CREA) and identify real estate professionals who are members of CREA (REALTOR®, REALTORS®) and/or the quality of services they provide (MLS®, Multiple Listing Service®)

Listing information last updated on August 2nd, 2025 at 2:17pm MDT