

\$10,000 - Hwy 866, Rural Smoky Lake County

MLS® #E4441822

\$10,000

0 Bedroom, 0.00 Bathroom,
Rural on 37.16 Acres

None, Rural Smoky Lake County, AB

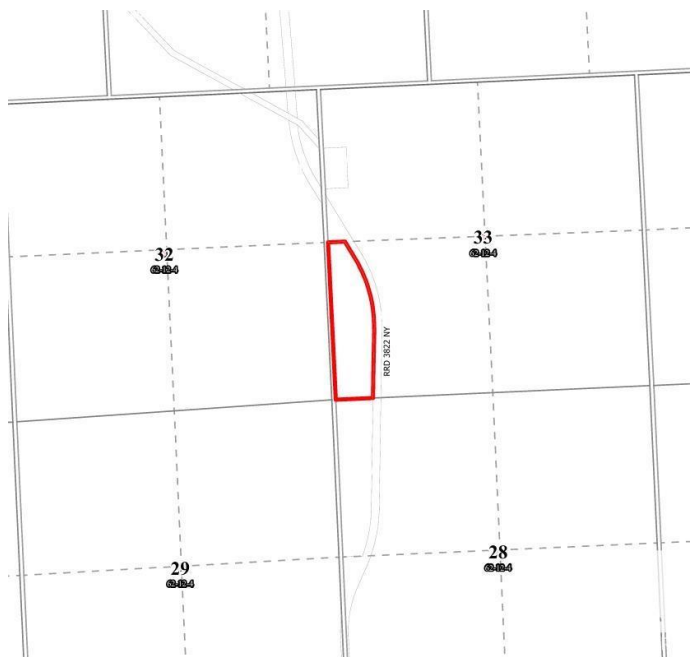
37.16 Acres Farm Grazing License for sale by Auction - Bidding starts June 20 at 9:00am. Lots begin closing at 2pm June 26, 2025. Listed price is starting bid/reserve for auction and has no bearing on final sale price or actual value. Carrying capacity is estimated as 8 AUMs (Animal Unit Months) of use annually. Visible fencing on east side of parcel along highway. LAND SIZE: 15 hectares / 37.16 Acres. LEGALS: Part of SW-33-62-12-W4

Essential Information

MLS® #	E4441822
Price	\$10,000
Bathrooms	0.00
Acres	37.16
Type	Rural
Sub-Type	Vacant Lot/Land
Status	Active

Community Information

Address	Hwy 866
Area	Rural Smoky Lake County
Subdivision	None
City	Rural Smoky Lake County
County	ALBERTA
Province	AB
Postal Code	T0A 3L0



Exterior

Exterior Features See Remarks

Additional Information

Date Listed June 11th, 2025
Days on Market 6
Zoning Zone 60

DATA IS DEEMED RELIABLE BUT IS NOT GUARANTEED ACCURATE BY THE REALTORS® ASSOCIATION OF EDMONTON. COPYRIGHT 2025 BY THE REALTORS® ASSOCIATION OF EDMONTON. ALL RIGHTS RESERVED.Trademarks are owned or controlled by the Canadian Real Estate Association (CREA) and identify real estate professionals who are members of CREA (REALTOR®, REALTORS®) and/or the quality of services they provide (MLS®, Multiple Listing Service®)
Listing information last updated on June 17th, 2025 at 12:17pm MDT