

## \$10,000 - Twp Rd 354, Rural Paintearth County

MLS® #E4441835

**\$10,000**

0 Bedroom, 0.00 Bathroom,  
Rural on 320.41 Acres

None, Rural Paintearth County, AB

Farm Grazing License for sale by Auction -  
Bidding starts June 20 at 9:00am. Lots begin  
closing at 2pm June 26, 2025. Listed price is  
starting bid/reserve for auction and has no  
bearing on final sale price or actual value.

LAND SIZE: 129.7 hectares / 320.41 Acres.

Carrying capacity is estimated as 120 AUMs  
(Animal Unit Months) of use annually.

Perimeter fencing appears to be in fair  
condition, no cross fencing, access gate at  
southeast corner. LEGALS: W-29-35-13-W4

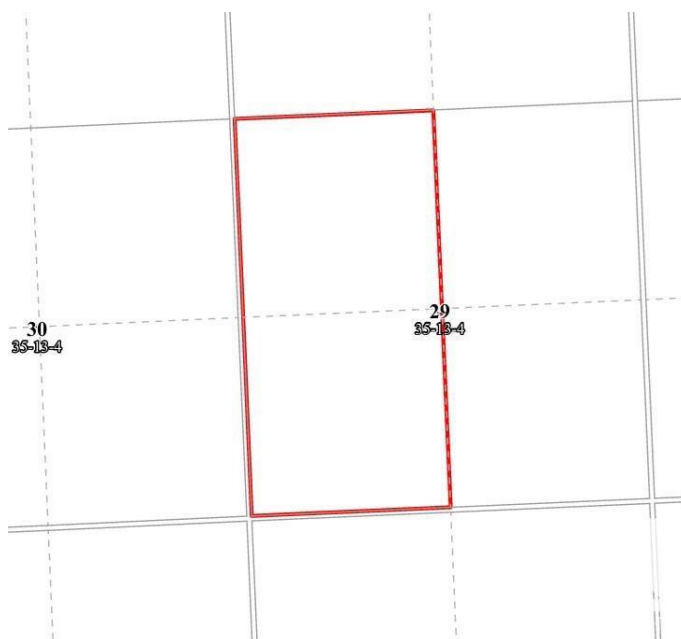


### Essential Information

MLS® #	E4441835
Price	\$10,000
Bathrooms	0.00
Acres	320.41
Type	Rural
Sub-Type	Vacant Lot/Land
Status	Active

### Community Information

Address	Twp Rd 354
Area	Rural Paintearth County
Subdivision	None
City	Rural Paintearth County
County	ALBERTA
Province	AB



Postal Code            T0C 0X0

**Exterior**

Exterior Features    See Remarks

**Additional Information**

Date Listed            June 11th, 2025

Days on Market      5

Zoning                Zone Z

DATA IS DEEMED RELIABLE BUT IS NOT GUARANTEED ACCURATE BY THE REALTORS® ASSOCIATION OF EDMONTON. COPYRIGHT 2025 BY THE REALTORS® ASSOCIATION OF EDMONTON. ALL RIGHTS RESERVED.Trademarks are owned or controlled by the Canadian Real Estate Association (CREA) and identify real estate professionals who are members of CREA (REALTOR®, REALTORS®) and/or the quality of services they provide (MLS®, Multiple Listing Service®)

Listing information last updated on June 16th, 2025 at 4:47am MDT