

Courtesy Of Guido Kamanzi Of Sterling Real Estate

\$315,000 - 27 53524 Rr 275, Rural Parkland County

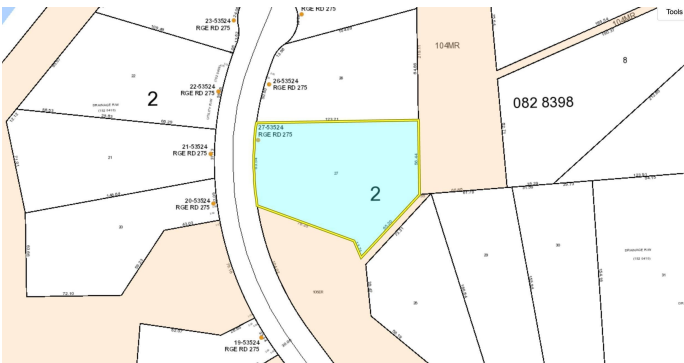
MLS® #E4441966

\$315,000

0 Bedroom, 0.00 Bathroom,
Rural on 2.44 Acres

Muir Lake Heights, Rural Parkland County, AB

Welcome to Cornerstone Estates (Muir Lake Heights) where executive acreage lots invite you to build your dream home in a serene, upscale community. Nestled between scenic Muir Lake and the Chickakoo Lake Recreation Area, this location offers peaceful living with nature at your doorstep. Only minutes from Spruce Grove and Stony Plain with paved roads the entire way. Cornerstone Estates combines the tranquillity of country living with convenient access to city amenities. This prestigious neighbourhood features custom-built homes and strictly maintained architectural standards, ensuring lasting beauty and value. Whether you prefer a wooded retreat or an open walk-out estate, Cornerstone offers a unique blend of privacy, elegance, and natural charm. This lots has lots of trees for your privacy. With numerous new homes already established, the community is thriving. come be part of its exceptional growth.



Essential Information

| | |
|-----------|-----------|
| MLS® # | E4441966 |
| Price | \$315,000 |
| Bathrooms | 0.00 |
| Acres | 2.44 |
| Type | Rural |

| | |
|----------|-----------------|
| Sub-Type | Vacant Lot/Land |
| Status | Active |

Community Information

| | |
|-------------|-----------------------|
| Address | 27 53524 Rr 275 |
| Area | Rural Parkland County |
| Subdivision | Muir Lake Heights |
| City | Rural Parkland County |
| County | ALBERTA |
| Province | AB |
| Postal Code | T7X 3Y6 |

Exterior

| | |
|-------------------|---|
| Exterior Features | Cul-De-Sac, Flat Site, Schools, Treed Lot |
|-------------------|---|

Additional Information

| | |
|----------------|-----------------|
| Date Listed | June 12th, 2025 |
| Days on Market | 4 |
| Zoning | Zone 70 |

DATA IS DEEMED RELIABLE BUT IS NOT GUARANTEED ACCURATE BY THE REALTORS® ASSOCIATION OF EDMONTON. COPYRIGHT 2025 BY THE REALTORS® ASSOCIATION OF EDMONTON. ALL RIGHTS RESERVED. Trademarks are owned or controlled by the Canadian Real Estate Association (CREA) and identify real estate professionals who are members of CREA (REALTOR®, REALTORS®) and/or the quality of services they provide (MLS®, Multiple Listing Service®)

Listing information last updated on June 16th, 2025 at 11:47am MDT