

\$175,000 - 105 10520 80 Avenue, Edmonton

MLS® #E4442917

\$175,000

1 Bedroom, 1.00 Bathroom, 690 sqft

Condo / Townhouse on 0.00 Acres

Queen Alexandra, Edmonton, AB

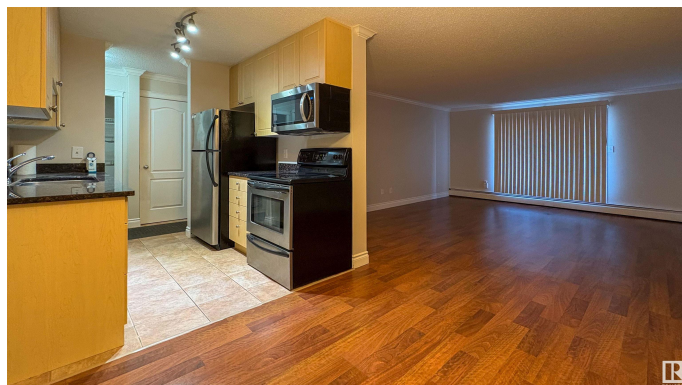
Just steps from Whyte Avenue and within walking distance to the University of Alberta, this freshly painted ground-floor condo in Cambridge Place offers stylish urban living! Featuring 742 sqft of bright, open-concept space, this one-bedroom, one-bathroom unit includes sleek laminate and tile flooring throughout. The spacious living room is filled with natural light and opens onto a private balcony overlooking a serene green space. The dining area is perfect for hosting, while the walk-through kitchen boasts stainless steel appliances and a functional design. The generously sized bedroom offers ample closet space, and the in-suite laundry with extra storage adds everyday convenience. A contemporary four-piece bathroom completes the home. Cambridge Place is a well-managed building, ideally located near the vibrant shops, restaurants, and amenities of Whyte Avenue. With a dedicated parking stall and easy access to everything the area has to offer, perfect for students, professionals, or investors alike!

Built in 1981

Essential Information

MLS® # E4442917

Price \$175,000



| | |
|----------------|------------------------|
| Bedrooms | 1 |
| Bathrooms | 1.00 |
| Full Baths | 1 |
| Square Footage | 690 |
| Acres | 0.00 |
| Year Built | 1981 |
| Type | Condo / Townhouse |
| Sub-Type | Lowrise Apartment |
| Style | Single Level Apartment |
| Status | Active |

Community Information

| | |
|-------------|---------------------|
| Address | 105 10520 80 Avenue |
| Area | Edmonton |
| Subdivision | Queen Alexandra |
| City | Edmonton |
| County | ALBERTA |
| Province | AB |
| Postal Code | T6E 1V3 |

Amenities

| | |
|-----------|---|
| Amenities | Detectors Smoke, No Animal Home, No Smoking Home, Security Door, Storage-In-Suite |
| Parking | Stall |

Interior

| | |
|--------------|--|
| Appliances | Dishwasher-Built-In, Freezer, Microwave Hood Fan, Refrigerator, Stacked Washer/Dryer, Stove-Electric |
| Heating | Baseboard, Water |
| # of Stories | 4 |
| Stories | 4 |
| Has Basement | Yes |
| Basement | None, No Basement |

Exterior

| | |
|-------------------|---|
| Exterior | Wood, Brick, Stucco |
| Exterior Features | Back Lane, Playground Nearby, Public Transportation, Schools, Shopping Nearby |
| Roof | Tar & Gravel |

| | |
|--------------|---------------------|
| Construction | Wood, Brick, Stucco |
| Foundation | Concrete Perimeter |

School Information

| | |
|------------|----------------------|
| Elementary | Mill Creek, McKernan |
| Middle | Allendale |
| High | Strathcona |

Additional Information

| | |
|----------------|-----------------|
| Date Listed | June 17th, 2025 |
| Days on Market | 5 |
| Zoning | Zone 15 |
| Condo Fee | \$352 |

DATA IS DEEMED RELIABLE BUT IS NOT GUARANTEED ACCURATE BY THE REALTORS® ASSOCIATION OF EDMONTON. COPYRIGHT 2025 BY THE REALTORS® ASSOCIATION OF EDMONTON. ALL RIGHTS RESERVED.Trademarks are owned or controlled by the Canadian Real Estate Association (CREA) and identify real estate professionals who are members of CREA (REALTOR®, REALTORS®) and/or the quality of services they provide (MLS®, Multiple Listing Service®)

Listing information last updated on June 22nd, 2025 at 8:17am MDT