

## \$143,000 - 1503 Jubilee Drive, Sherwood Park

MLS® #E4443651

**\$143,000**

3 Bedroom, 2.00 Bathroom, 1,213 sqft

Land Lease Community on 0.00 Acres

Jubilee Landing, Sherwood Park, AB

Welcome to this charming and well-maintained mobile home in the heart of Jubilee Landing, Sherwood Park! With 3 spacious bedrooms, this home is perfect for families, first-time buyers, or anyone looking for affordable and comfortable living in a great community. Step inside to find a bright and open living space, ideal for family gatherings and everyday living. The kitchen features ample cabinet space, a cozy dining area, and modern appliances. The primary bedroom offers privacy and comfort, while the additional two bedrooms are perfect for kids, guests, or a home office. One of the standout features of this home is the backyard, set up for kids “ with space to run, play, and enjoy the outdoors. Whether you’re hosting a BBQ or watching the little ones play, this yard is ready for family fun. Located in a quiet, friendly neighborhood with easy access to schools, shopping, and major roadways, Jubilee Landing is one of Sherwood Park’s most welcoming manufactured home communities.

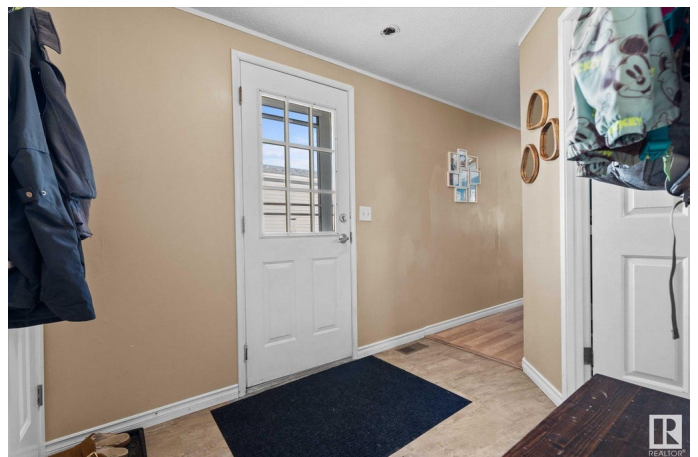
Built in 1992

### Essential Information

MLS® # E4443651

Price \$143,000

Bedrooms 3



Bathrooms	2.00
Full Baths	2
Square Footage	1,213
Acres	0.00
Year Built	1992
Type	Land Lease Community
Sub-Type	Detached Single Family
Style	Bungalow
Status	Active

### Community Information

Address	1503 Jubilee Drive
Area	Sherwood Park
Subdivision	Jubilee Landing
City	Sherwood Park
County	ALBERTA
Province	AB
Postal Code	T8H 1M1

### Amenities

Parking	2 Outdoor Stalls
---------	------------------

### Interior

Interior Features	ensuite bathroom
Appliances	Dishwasher-Built-In, Dryer, Microwave Hood Fan, Refrigerator, Stove-Electric, Washer
Heating	Forced Air-1, Natural Gas

### Exterior

Exterior	Modular
Construction	Modular
Foundation	Block

### Additional Information

Date Listed	June 20th, 2025
Days on Market	38
Zoning	Zone 25

DATA IS DEEMED RELIABLE BUT IS NOT GUARANTEED ACCURATE BY THE REALTORS® ASSOCIATION OF EDMONTON. COPYRIGHT 2025 BY THE REALTORS® ASSOCIATION OF EDMONTON. ALL RIGHTS RESERVED. Trademarks are owned or controlled by the Canadian Real Estate Association (CREA) and identify real

estate professionals who are members of CREA (REALTOR®®, REALTORS®®) and/or the quality of services they provide (MLS®®, Multiple Listing Service®®)

Listing information last updated on July 28th, 2025 at 3:03pm MDT