

\$349,900 - 35 20 Deerbourne Drive, St. Albert

MLS® #E4443671

\$349,900

3 Bedroom, 2.50 Bathroom, 1,312 sqft
Condo / Townhouse on 0.00 Acres

Deer Ridge (St. Albert), St. Albert, AB

RARE FIND and AMAZING location in the absolutely beautiful, family friendly community of Deer Ridge! This 2 storey townhouse has a highly desirable open concept, a bright, open layout, 3 generous sized bedrooms, 2.5 bathrooms, including a Jacuzzi style tub and an ensuite in the primary suite. Many BONUS UPGRADES including a fully finished basement, gas fireplace, air conditioning and a double attached garage. The location of this home could not be more perfect with schools nearby, transit steps away, shopping, parks and within walking distance from Starbucks. What more could you ask for?! These units are well managed, have low condo fees and are very low maintenance.



Built in 1992

Essential Information

MLS® #	E4443671
Price	\$349,900
Bedrooms	3
Bathrooms	2.50
Full Baths	2
Half Baths	1
Square Footage	1,312
Acres	0.00
Year Built	1992

Type Condo / Townhouse
 Sub-Type Townhouse
 Style 2 Storey
 Status Active

Community Information

Address 35 20 Deerbourne Drive
 Area St. Albert
 Subdivision Deer Ridge (St. Albert)
 City St. Albert
 County ALBERTA
 Province AB
 Postal Code T8N 6E1

Amenities

Amenities Air Conditioner, Detectors S
 Patio, See Remarks
 Parking Double Garage Attached

Interior

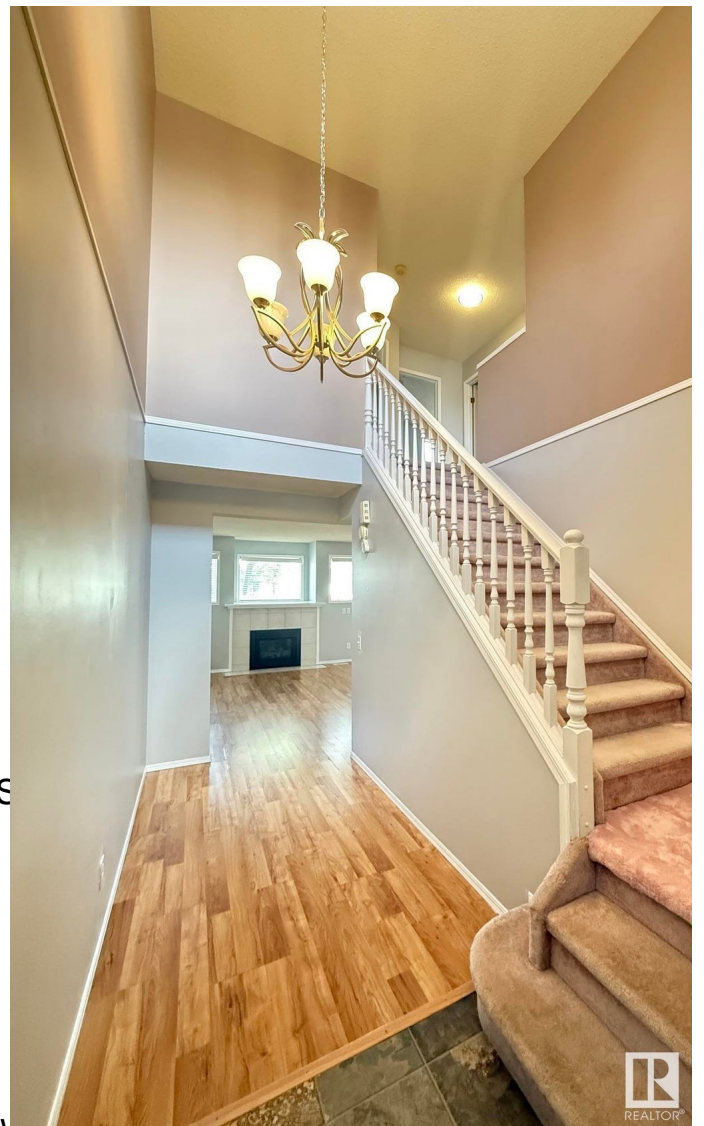
Interior Features ensuite bathroom
 Appliances Dishwasher-Built-In, Dryer,
 Refrigerator, Stove-Electric, Wasner
 Heating Forced Air-1, Natural Gas
 Fireplace Yes
 Fireplaces Mantel
 Stories 3
 Has Basement Yes
 Basement Full, Finished

Exterior

Exterior Wood, Vinyl
 Exterior Features Low Maintenance Landscape, Playground Nearby, Public
 Transportation, Schools, Shopping Nearby, See Remarks
 Roof Asphalt Shingles
 Construction Wood, Vinyl
 Foundation Concrete Perimeter

School Information

Elementary Muriel Martin, JJ Nearing



Middle VJM, William D Cuts
High Bellerose, St. Albert High

Additional Information

Date Listed June 21st, 2025
Days on Market 16
Zoning Zone 24
Condo Fee \$352



DATA IS DEEMED RELIABLE BUT IS NOT GUARANTEED ACCURATE BY THE REALTORS® ASSOCIATION OF EDMONTON. COPYRIGHT 2025 BY THE REALTORS® ASSOCIATION OF EDMONTON. ALL RIGHTS RESERVED. Trademarks are owned or controlled by the Canadian Real Estate Association (CREA) and identify real estate professionals who are members of CREA (REALTOR®, REALTORS®) and/or the quality of services they provide (MLS®, Multiple Listing Service®)

Listing information last updated on July 7th, 2025 at 6:47am MDT