

## \$409,000 - 263 Terra Nova Crescent, Cold Lake

MLS® #E4443893

**\$409,000**

3 Bedroom, 2.00 Bathroom, 1,290 sqft

Single Family on 0.00 Acres

Cold Lake North, Cold Lake, AB

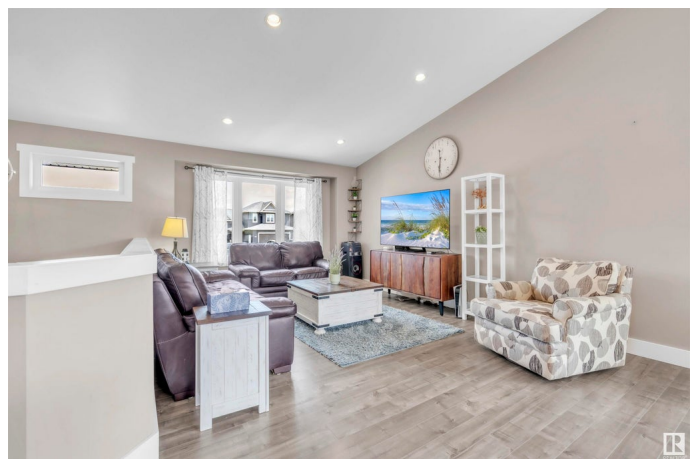
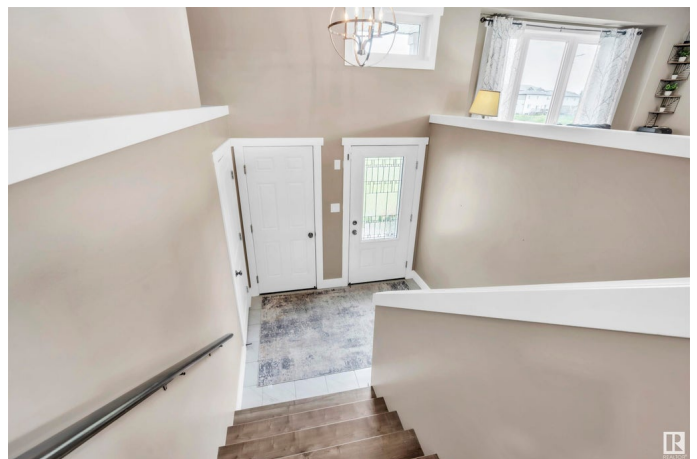
Fantastic family home in the growing community of Parkview Estates - just down the road from Kinosoo beach and close to the hospital. This home have been lovingly maintained and ready for a quick possession. With 3 bedrooms upstairs and a party finished basement downstairs waiting for your final touches this is a great option. The main floor features laminate flooring throughout and vaulted ceilings overhead. The open concept living area includes bright living room with huge front window; spacious dining room and great working kitchen with centre island, quartz countertops, pantry and gas range. Down the hall are 3 bedrooms including primary with walk in closet and ensuite. The basement is already warmed by slab heat and has been partly framed with a bedroom/office space partly completed. Central Air is also an added benefit of this home. Outside, the property is fully fenced and landscaped & a heated double car garage rounds out this great home. Join the growing community of Parkview Estates today!

Built in 2017

### Essential Information

MLS® # E4443893

Price \$409,000



Bedrooms	3
Bathrooms	2.00
Full Baths	2
Square Footage	1,290
Acres	0.00
Year Built	2017
Type	Single Family
Sub-Type	Detached Single Family
Style	Bi-Level
Status	Active

### Community Information

Address	263 Terra Nova Crescent
Area	Cold Lake
Subdivision	Cold Lake North
City	Cold Lake
County	ALBERTA
Province	AB
Postal Code	T9M 0L5

### Amenities

Amenities	Air Conditioner, Deck, Vaulted Ceiling, See Remarks
Parking	Double Garage Attached, Heated, Parking Pad Cement/Paved

### Interior

Interior Features	ensuite bathroom
Appliances	Air Conditioning-Central, Dryer, Microwave Hood Fan, Refrigerator, Stove-Gas, Washer
Heating	Forced Air-1, In Floor Heat System, Natural Gas
Stories	2
Has Basement	Yes
Basement	Full, Partially Finished

### Exterior

Exterior	Wood, Vinyl
Exterior Features	Fenced, Landscaped, Playground Nearby
Roof	Asphalt Shingles
Construction	Wood, Vinyl
Foundation	Concrete Perimeter

**School Information**

Elementary	Cold Lake Elementary
Middle	Nelson Heights Middle
High	Cold Lake High

**Additional Information**

Date Listed	June 23rd, 2025
Days on Market	40
Zoning	Zone 60

DATA IS DEEMED RELIABLE BUT IS NOT GUARANTEED ACCURATE BY THE REALTORS® ASSOCIATION OF EDMONTON. COPYRIGHT 2025 BY THE REALTORS® ASSOCIATION OF EDMONTON. ALL RIGHTS RESERVED.Trademarks are owned or controlled by the Canadian Real Estate Association (CREA) and identify real estate professionals who are members of CREA (REALTOR®, REALTORS®) and/or the quality of services they provide (MLS®, Multiple Listing Service®)

Listing information last updated on August 2nd, 2025 at 9:02am MDT