

\$475,000 - 3 Spring Grove Crescent, Spruce Grove

MLS® #E4444270

\$475,000

3 Bedroom, 2.50 Bathroom, 1,997 sqft

Single Family on 0.00 Acres

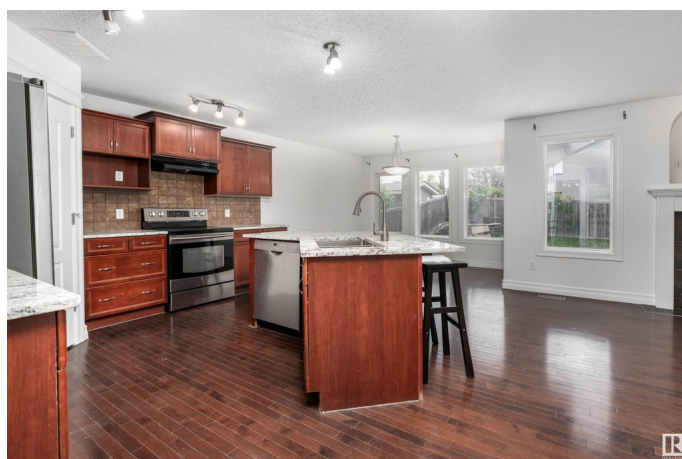
Spruce Ridge, Spruce Grove, AB

Freshly updated with new carpet and paint throughout, this spacious family home offers over 1,900 sq ft of well-planned living space! The open-concept main floor features a large tiled entry, a bright dining area, and a refreshed kitchen with brand-new granite countertops, sink, and faucet. Rich dark cabinetry, matching hardwood floors, and a walk-through pantry provide style and function. The sunlit living room includes a cozy gas fireplace, and main floor laundry adds convenience. Upstairs, a spacious bonus room with large windows is perfect for movie nights or a home office. The impressive primary suite offers his-and-hers walk-in closets, a charming window seat, and a 4pc ensuite with a deep soaker tub. Two bedrooms and a family bath complete the upper level. Outside, enjoy the fully fenced yard with a composite deck and dog run. Located close to the Tri-Leisure Centre, schools, shopping, and parks. Available for immediate possession!

Built in 2007

Essential Information

MLS® #	E4444270
Price	\$475,000
Bedrooms	3
Bathrooms	2.50



Full Baths	2
Half Baths	1
Square Footage	1,997
Acres	0.00
Year Built	2007
Type	Single Family
Sub-Type	Detached Single Family
Style	2 Storey
Status	Active

Community Information

Address	3 Spring Grove Crescent
Area	Spruce Grove
Subdivision	Spruce Ridge
City	Spruce Grove
County	ALBERTA
Province	AB
Postal Code	T5Y 0P7

Amenities

Amenities	Deck, Patio
Parking Spaces	4
Parking	Double Garage Attached

Interior

Interior Features	ensuite bathroom
Appliances	Dishwasher-Built-In, Dryer, Hood Fan, Refrigerator, Stove-Electric, Washer
Heating	Forced Air-1, Natural Gas
Fireplace	Yes
Fireplaces	Tile Surround
Stories	2
Has Basement	Yes
Basement	Full, Unfinished

Exterior

Exterior	Wood, Stone, Vinyl
Exterior Features	Fenced, Landscaped, Playground Nearby, Public Swimming Pool, Schools, Shopping Nearby

Roof	Asphalt Shingles
Construction	Wood, Stone, Vinyl
Foundation	Concrete Perimeter

School Information

Elementary	Copperhaven School
Middle	Copperhaven School
High	St. Peter the Apostle

Additional Information

Date Listed	June 25th, 2025
Days on Market	11
Zoning	Zone 91

DATA IS DEEMED RELIABLE BUT IS NOT GUARANTEED ACCURATE BY THE REALTORS® ASSOCIATION OF EDMONTON. COPYRIGHT 2025 BY THE REALTORS® ASSOCIATION OF EDMONTON. ALL RIGHTS RESERVED. Trademarks are owned or controlled by the Canadian Real Estate Association (CREA) and identify real estate professionals who are members of CREA (REALTOR®, REALTORS®) and/or the quality of services they provide (MLS®, Multiple Listing Service®)

Listing information last updated on July 6th, 2025 at 2:02pm MDT