

\$924,900 - 22037 Twp Road 520, Rural Strathcona County

MLS® #E4444404

\$924,900

3 Bedroom, 2.00 Bathroom, 1,313 sqft

Rural on 56.35 Acres

None, Rural Strathcona County, AB

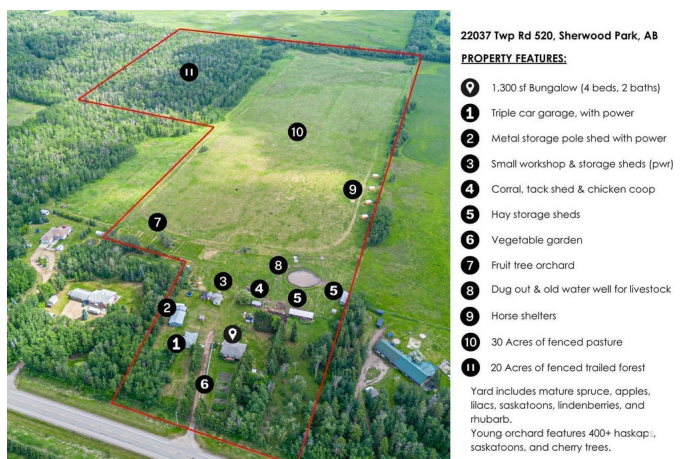
Just 14 mins from Sherwood Park & 18 mins from Edmonton, this 56-acre property offers everything for equestrian enthusiasts and hobby farmers. The charming 1310 sq ft bungalow boasts 3 bedrooms, a full bath, a spacious kitchen, and family room with stunning garden and tree-lined views. The fully finished basement features a 4th bedroom, 3-piece bath, laundry, and large rec room. Recent upgrades include fresh paint, a new deep water well system, and a sunny rear deck perfect for morning coffee. Key features include: triple garage, metal pole barn, small workshop, multiple storage buildings, horse corral, tack shed, chicken coop, hay storage, and a new developing 400+ plant fruit orchard (haskaps, sasks, cherries). The property also offers 30 acres of fully fenced pasture and 20 acres of forest trails. Enjoy a peaceful, close-knit community with Fultonvale School (K-9) on the bus route, plus the Strathcona Olympiette Centre just minutes away. Donâ€™t miss out on this rare opportunity!

Built in 1967

Essential Information

MLS® # E4444404

Price \$924,900



Bedrooms	3
Bathrooms	2.00
Full Baths	2
Square Footage	1,313
Acres	56.35
Year Built	1967
Type	Rural
Sub-Type	Detached Single Family
Style	Bungalow
Status	Active

Community Information

Address	22037 Twp Road 520
Area	Rural Strathcona County
Subdivision	None
City	Rural Strathcona County
County	ALBERTA
Province	AB
Postal Code	T8A 1A6

Amenities

Features	Deck, Hot Water Natural Gas, R.V. Storage, Workshop, See Remarks
----------	------------------------------------------------------------------

Interior

Heating	Forced Air-1, Natural Gas
Fireplace	Yes
Stories	2
Has Basement	Yes
Basement	Full, Finished

Exterior

Exterior	Wood
Exterior Features	Airport Nearby, Backs Onto Park/Trees, Fenced, Fruit Trees/Shrubs, Schools, Vegetable Garden, See Remarks
Construction	Wood
Foundation	Concrete Perimeter

Additional Information

Date Listed	June 26th, 2025
-------------	-----------------

Days on Market 18

Zoning Zone 60

DATA IS DEEMED RELIABLE BUT IS NOT GUARANTEED ACCURATE BY THE REALTORS® ASSOCIATION OF EDMONTON. COPYRIGHT 2025 BY THE REALTORS® ASSOCIATION OF EDMONTON. ALL RIGHTS RESERVED. Trademarks are owned or controlled by the Canadian Real Estate Association (CREA) and identify real estate professionals who are members of CREA (REALTOR®, REALTORS®) and/or the quality of services they provide (MLS®, Multiple Listing Service®)

Listing information last updated on July 14th, 2025 at 5:17am MDT