

Courtesy Of Lindsay Mercer Of The Good Real Estate Company

# **\$889,000 - 12 53120 Rge Road 15, Rural Parkland County**

MLS® #E4444520

**\$889,000**

4 Bedroom, 3.50 Bathroom, 1,676 sqft

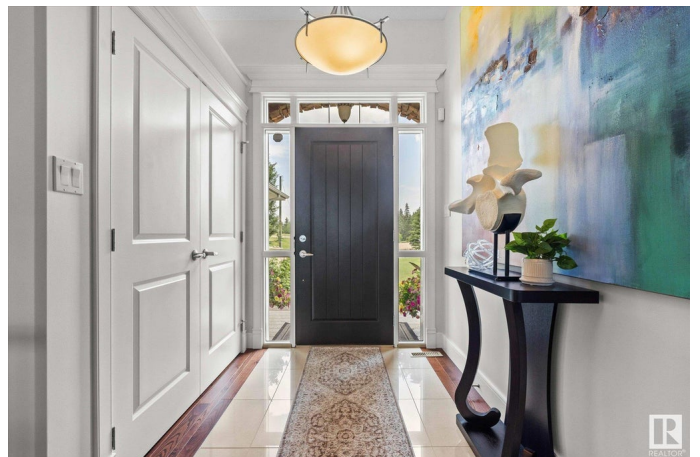
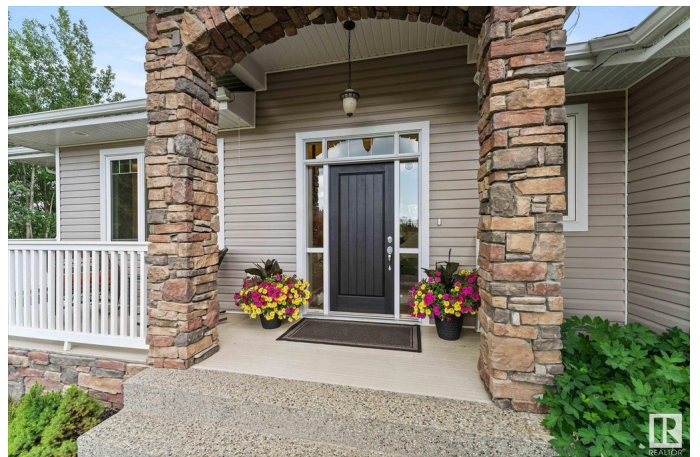
Rural on 2.05 Acres

The Views at Willow Peak, Rural Parkland County, AB

Welcome home to this incredible custom build walkout bungalow with 3078 sq/ft of living space just 7 min west of Stony Plain! No expense was spared on this gorgeous 4 bedroom, 4 bath home with hardwood floors, granite counters throughout and coffered ceilings. The chef's kitchen features luxury DCS appliances, walk through pantry and separate coffee bar area. Perfect for multi-generational living a SECOND kitchen, living rm & primary bdrm with ensuite have a separate entrance on the main level! Downstairs you find a second primary bedroom with gorgeous ensuite, two additional bdrms, full bath and flex space with 2nd gas FP. The west-facing covered deck overlooks your pristinely manicured backyard with fire pit area, gazebo & raised garden beds. There's even a chicken coop! So much PRIVACY! TWO furnaces, oversized HWT and fully insulated & soundproofed interior walls. Triple heated garage and just 2 minutes from Beach Corner store, restaurant and best of all... the ice cream shop. This home is a must see!

Built in 2011

## **Essential Information**



MLS® #	E4444520
Price	\$889,000
Bedrooms	4
Bathrooms	3.50
Full Baths	3
Half Baths	1
Square Footage	1,676
Acres	2.05
Year Built	2011
Type	Rural
Sub-Type	Detached Single Family
Style	Hillside Bungalow
Status	Active

### **Community Information**

Address	12 53120 Rge Road 15
Area	Rural Parkland County
Subdivision	The Views at Willow Peak
City	Rural Parkland County
County	ALBERTA
Province	AB
Postal Code	T7Y 2E4

### **Amenities**

Features	Air Conditioner, Ceiling 9 ft., Deck, Detectors Smoke, Gazebo, Hot Tub, Vinyl Windows, Walkout Basement, Natural Gas BBQ Hookup
----------	---

### **Interior**

Interior Features	ensuite bathroom
Heating	Forced Air-2, Natural Gas
Fireplace	Yes
Stories	2
Has Basement	Yes
Basement	Full, Finished

### **Exterior**

Exterior	Wood
Exterior Features	Cul-De-Sac, Fruit Trees/Shrubs, Landscaped, Partially Fenced
Construction	Wood

Foundation                      Concrete Perimeter

**Additional Information**

Date Listed                      June 26th, 2025

Days on Market                5

Zoning                            Zone 90

DATA IS DEEMED RELIABLE BUT IS NOT GUARANTEED ACCURATE BY THE REALTORS® ASSOCIATION OF EDMONTON. COPYRIGHT 2025 BY THE REALTORS® ASSOCIATION OF EDMONTON. ALL RIGHTS RESERVED.Trademarks are owned or controlled by the Canadian Real Estate Association (CREA) and identify real estate professionals who are members of CREA (REALTOR®, REALTORS®) and/or the quality of services they provide (MLS®, Multiple Listing Service®)

Listing information last updated on July 1st, 2025 at 12:47am MDT